

PLAYBILL

WITCHES

A Dark Comedy by Jen Silverman

Oct 22 - Nov 12, 2023

-Previews Oct 20 & 21-



renaissance
THEATERWORKS



UNITEDPERFORMINGARTSFUND



UPAF IS FOR THE PERFORMING ARTS that you are here to enjoy today. We're for thousands of local artists in the spotlight and behind the scenes. We're for you — the audience — experiencing excitement, inspiration and connection. We're for Milwaukee, Tosa, Waukesha, Racine & beyond. We're for being together, surrounded by the magic of music, dance, song and theater.

We're for raising our community up.

You're for the arts too, so please join us to ensure that our world-class performing arts groups make a full recovery.

► DONATE TODAY. UPAF.ORG/DONATE

Milwaukee Ballet, Marie Collins, Photo by Mark Frohna. Skylight Music Theatre, Raven Dockery, Photo by Mark Frohna.

MUSIC | DANCE | SONG | THEATER



presents

WITCHES

by Jen Silverman

OCTOBER 22 – NOVEMBER 12 2023

(Previews Oct 20 & 21)

Directed by
SUZAN FETE

Production Manager
& Stage Manager
BAILEY WEGNER*

Asst. Stage Manager
BECK TRUMBULL

Technical Director
TONY LYONS

Lighting Design
NOELE STOLLMACK~

Scenic Design
JEFFREY D. KMIEC~

Sound Design
JOSH SCHMIDT~

Props Design
OLIVIA BASTIEN

Props Assistant
**ANGELINE
HOLTZMAN-FORBES**

Costume Design
AMY HORST

Wardrobe Supervisor
SHELBY KAISHIAN

Intimacy Director
JENNIFER DOBBY

Movement Design
JAYNE REGAN PINK

Fight Choreographer
JAMIE CHEATHAM

Show Mascot
**ROWENA THEODORA
WITCH**

Deck Supervisor
NAT GOELLER

Master Electrician
KATIE ANDERSON

Board Operator
FAITH LENSMTIH

Scenery Construction
**TONY LYONS,
TIMOTHY LINN**

Scenic Painting
CARRI DAHL

House Managers
CAROLINE NORTON, AUDWIN SHORT, BARBARA SLAGTER, KAYLENE HOWARD

~ Member of United Scenic Artists Local 829 *Member of Actor's Equity Association

WITCH was commissioned by Writers Theatre through the Literary Development Initiative, with the generous support of David and Mary Winton Green, and the world premiere was presented at Writers Theatre in Glencoe, Illinois (Michael Halberstam, Artistic Director; Kathryn M Lipuma, Executive Director) on September 27, 2018

This play will run approximately 90 min with no intermission.

SEASON SPONSORS Laura & Mike Arnow,

Jan Serr & John Shanon, Herzfeld Foundation, Shubert Foundation,
Bert L & Patricia S. Steigleder Charitable Trust

SHOW SPONSORS

Sherry & Rick Lundell
Sandy Zingler



TIME/PLACE

The Village of Edmonton
Then-ish.

CAST

Elizabeth Sawyer Marti Gobel*
Scratch Neil Brookshire*
Sir Arthur Banks Reese Madigan*
Cuddy Banks James Carrington*
Frank Thorney Joe Picchetti
Winnifred Eva Nimmer*

UNDERSTUDIES

*UNDERSTUDIES never substitute for a listed player unless
an announcement is made at the beginning of the play.*

u/s Elizabeth/Winnifred Ariana Manghera
u/s Scratch/Cuddy Connor Neckich
u/s Sir Arthur/Frank Will Oelke

**Member of Actors' Equity Association*

SPECIAL THANKS

Bat Stitch Crochet, Blizzard Lighting, Timothy Linn, Joel Penegor,
Next Act Theater, Milwaukee Chamber Theatre, Nathaniel Schardin

PROUD MEMBER

**M
K
E** **THEATER DISTRICT**

DIRECTOR NOTES

Jen Silverman's plays absolutely delight me.

One of the many remarkable things about her work is that she writes about women — often women over 40 — authentically. She writes about the desire to be visible and valued.

WITCH is an adaptation of the classic Jacobean play THE WITCH OF EDMONTON from 1621. Silverman maintains the Old-World setting, premise and characters but she cleverly uses 21st century language, emotional complexity and lots of humor to explore it.

This creates distance and safety.

The safety allows us to watch the play's despair and hopelessness without feeling hopeless ourselves.

Right now, it feels like we are bombarded with a constant stream of horrible and emotionally draining stories from the news, from social media and often from our entertainment. And I understand why audiences don't want to come to the theater to be bombarded again.

Comedy is a powerful weapon against despair. It allows us to think and talk about very hard things while simultaneously protecting us as we do it.

WITCH is not a light comedy. It looks truthfully at the human condition in all its complex and frightening glory, but it doesn't damage us in the process.

And that's why I love it.

Enjoy!

– Suzan Fete, Director



FOR YOUR INFORMATION

HEALTH SAFETY: With the prevalence of COVID-19, flu and other viruses, we support and encourage your personal decision to wear a mask. If you feel unwell, please opt to stay home. RTW will handle health-related cancellations on a case-by-case basis.

FOOD & BEVERAGE: Drinks may be taken into the theatre, but food is not permitted.

ENTERING & EXITING THE THEATER SPACE: Please use walkways to access the seating areas and refrain from crossing over the stage.

CANCELLATION POLICY: Renaissance Theaterworks does not cancel performances due to inclement weather, nor do we offer refunds due to weather.

LATECOMER POLICY: Latecomers will not be seated until an appropriate time in the performance. Seating may not be permitted 30 minutes after the start of a performance. If you are running late, please call the Ticket Office at 414-278-0765.

HEARING LOOP LISTENING SYSTEM: The theater is equipped with an advanced technology Hearing Loop listening system. The system will broadcast directly to those with T-coil hearing aids. Portable assistive listening devices for conventional listening are available and may be checked out at the Concessions Counter.

ELECTRONIC DEVICES: NO cameras or recording devices of any kind (including smartphones) are allowed to be used in the theater. Please turn off all electronic equipment.

STUDENT, GROUP, & SENIOR DISCOUNTS: Please contact the Ticket Office at 414-278-0765.

AUDIO LOOP INSTRUCTIONS

T-Coil Listeners: Simply set your hearing device to the Loop setting and enjoy the show.

Conventional Listeners: Check out a receiver and headphone set at the Concessions Counter. The House Manager can instruct you on its use, but here are some simple instructions.

Like a transistor radio, the small box has an off-on and volume knob; turn on and adjust for your comfort level. You will need to be in the seats to receive the Loop signal.

The box works directionally; that is, it matters which way it is pointing.

- In most of our seating, the box works best when held up straight, with the volume knob on top, and the flat back pointing toward the stage.
- In the front rows, you will get the strongest signal with the box laying flat on your leg, with the flat back pointing straight to the floor.

Please ask the House Manager for assistance, if needed. We hope you enjoy the show.

BIOGRAPHIES



Jen Silverman – PLAYWRIGHT

Jen Silverman is a playwright, novelist, poet and screenwriter. Jen's plays include

COLLECTIVE RAGE: A PLAY IN 5 BETTIES (Woolly Mammoth, MCC, Southwark Playhouse London); THE MOORS (Yale Rep, Playwrights Realm); THE ROOMMATE (Humana Festival, Williamstown, Steppenwolf, South Coast, Long Wharf) and WITCH (Writer's Theatre, Geffen, Huntington). Jen's plays have been produced internationally in Australia, the UK, the Czech Republic, Switzerland, Spain, and elsewhere. Jen is a three-time MacDowell Fellow, a member of New Dramatists, and an Affiliated Artist with New Georges, Clubbed Thumb, Space on Ryder Farm, and the Playwrights Center. Honors: The Helen Merrill Award, the Yale Drama Series Award, the Lilly Award, Fellowships from the New York Foundation for the Arts and the Lower Manhattan Cultural Council. Jen is a 2022 National Endowment for the Arts Fellow (prose) and 2022 Guggenheim Fellow (theatre).



Suzan Fete (she/her) – DIRECTOR & ARTISTIC DIRECTOR

Suzan is a graduate of University of Illinois. Suzan co-founded RTW in 1993. Favorite RTW

projects include: directing TOPDOG/ UNDERDOG, THE SHAPE OF THINGS, BLACKBIRD, TOP GIRLS, and THE ROAD TO MECCA, touring NEAT to Port Elizabeth, South Africa in 2013 and

finishing as finalists with ALL OF THE EVERYTHING and LUCKY NUMBERS in the Samuel French Off Off Broadway Short Play Festival, in 2019 and 2015 respectively. Suzan is especially proud that RTW won the prestigious 50/50 in 2020 International Applause Award for the 2015-16 season in recognition of RTW's commitment to women playwrights. Suzan lives happily in Wauwatosa with her husband, Jeff.



Marti Gobel* – ELIZABETH SAWYER

Marti Gobel is an Actor, Director and Teaching Artist. She returns to Renaissance

Theaterworks with great love and affection. Past RTW acting credits include: THE PERSIANS, CRUMBS FROM THE TABLE OF JOY, NEAT 2012/2021 (Milwaukee, Sheboygan, South Africa), THE VIOLET HOUR, SEX WITH STRANGERS and THE ROOMMATE. Past RTW directing credits include: THE BALLAD OF EMMETT TILL, NATIVE GARDENS and POOF!. Ms Gobel is a proud member of both AEA and SAG-AFTRA.



Neil Brookshire* – SCRATCH

PHOTOGRAPH 51, THE VIOLET HOUR (Renaissance

Theaterworks). Additional Milwaukee credits: THERE IS A HAPPINESS THAT MORNING IS, THE LAST WHITE MAN (Next Act Theatre). Wisconsin and Regional companies: Peninsula Players, Door Shakespeare, Great Lakes Theater, Boise Contemporary

BIOGRAPHIES (cont.)

Theater, Idaho Dance Theatre, Opera Idaho, Company of Fools, Seattle Novyi Theatre, People's Light, Cadence Theatre Co, Lake Tahoe Shakespeare Festival, Tennessee Shakespeare Co., and ten seasons with Idaho Shakespeare Festival. He has performed the solo show, BENT COMPASS, in three festivals in Canada. Neil has a BA in Interdisciplinary Studies from Boise State University, and an MFA in Acting from Northern Illinois University.



**Reese Madigan* –
SIR ARTHUR BANKS**

Reese is thrilled to be back at RTW, where he's previously been seen as Misha in RUSSIAN

TRANSPORT, and as many people in AMELIA. He's played both on and Off Broadway and at many regional theaters around the country. At Next Act he's appeared in SILENT SKY and LOMBARDI; and in 20 productions at Milwaukee Rep where a few favorites include A

CHRISTMAS CAROL (Bob Cratchit), DEATH OF A SALESMAN (Biff Loman), CAT ON A HOT TIN ROOF (Brick Pollitt), LOMBARDI (Paul Hornung). Other Wisconsin credits: BORN YESTERDAY (Paul Verrall), APT; LIFE SUCKS (Astor), Forward Theatre; and as MACBETH, Door Shakespeare. Later this season, he's honored to be back at both The Milwaukee Rep in A CHRISTMAS CAROL and Next Act in THE TREASURER. Many thanks to Suzan and Jayne!



**James Carrington* –
CUDDY BANKS**

James Carrington is thrilled to be back with Renaissance

Theaterworks! James is an actor and singer based in Milwaukee and a graduate of UW-Madison's Acting Specialist B.F.A. Program. Some favorite roles include Matt in MR. BURNS: A POST ELECTRIC PLAY, Man 3 in THE BALLAD OF EMMETT TILL, The Lion in THE WIZ, William Barfée in THE 25TH ANNUAL PUTNAM COUNTY SPELLING BEE and Jim Fingal in LIFESPAN OF A FACT, Dun in PIPELINE and Golden Thunder in AIRNESS. James has been fortunate to work with many Wisconsin theaters, to name a few: Northern Sky Theater, Children's Theatre of Madison, Milwaukee Opera Theater, Door Shakespeare, First Stage Theatre, Skylight Music Theatre, Northern Sky Theater and Forward Theater. Up next James will be diving in to assistant direct THE BEST CHRISTMAS PAGEANT EVER with First Stage! Be safe, be well, be loved. Support the arts!



BIOGRAPHIES (cont.)



**Joe Picchetti –
FRANK THORNEY**

Joe Picchetti is thrilled to be returning to Renaissance Theaterworks for WITCH!

Previous credits with Renaissance include PHOTOGRAPH 51 (Don Caspar) and STILL (Constantinople). Currently based in Milwaukee, he has been lucky enough to perform with numerous regional companies throughout the midwest. Recent credits includes A CHRISTMAS CAROL (Children's Theatre of Madison); PRELUDES (Milwaukee Opera Theatre); THE LION IN WINTER (Milwaukee Chamber Theatre); A MIDSUMMER NIGHT'S DREAM, AS YOU LIKE IT, and THE COMEDY OF ERRORS (Summit Players Theatre). He would like to thank his family, friends, and Maddy for their never-ending love and support!



**Eva Nimmer* –
WINNIFRED**

Eva returns to Renaissance Theaterworks having appeared previously in

their 2022 production of ACTUALLY. Selected stage credits: GOD'S SPIES, THE REVOLUTIONISTS, RED HERRING, EQUIVOCATION (Next Act Theatre); THE NATIVITY VARIATIONS (Milwaukee Rep); WRITE ME A MURDER, RIPCORD (Peninsula Players Theatre); CHRISTMAS IN BABYLON (Milwaukee Chamber Theatre); MR. BURNS: A POST-ELECTRIC PLAY (Luminous Theatre); LUMBERJACKS IN LOVE, THE FISHERMAN'S DAUGHTERS, VICTORY FARM (Northern Sky Theater). Eva is also a writer and

musician, and sometimes appears singing backup with Milwaukee-based band Long Mama. www.evanimmer.com



**Olivia Bastien –
PROPS DESIGN**

Olivia Bastien is a graduate of the University of Wisconsin – Stevens Point, earning

a Bachelor of Fine Arts in Theatre Design and Technology. She is currently working as the Properties Artisan at First Stage. Her recent credits include Properties Designer for LAUGHS IN SPANISH (Milwaukee Chamber Theatre); TIDY, COST OF LIVING (Renaissance Theaterworks); HELLO, DOLLY!, FELLOW TRAVELERS, ONCE UPON A MATTRESS (Seagle Festival).



**Jamie Cheatham –
FIGHT
CHOREOGRAPHER**

Jamie Cheatham is a nationally recognized Fight Director and

Certified Teacher with the Society of American Fight Directors (SAFD). Recent local work includes WIFE OF A SALESMAN (Milwaukee Rep) and HUNCHBACK OF NOTRE DAME (Skylight Music Theatre). Past fight work includes the New York Shakespeare Festival, NYC Opera, the Alley Theatre (TX), Actor's Theatre of Louisville, and on Broadway: KING LEAR (with Glenda Jackson) and currently PURLIE VICTORIOUS (starring Leslie Odom, Jr.). His MFA is from Virginia Commonwealth University. He is a member of AEA and SAG-AFTRA and is the Head of Acting at Marquette University.

SPECIAL EVENTS

PREVIEW: *Be the first to see the show!*

Fri. Oct. 20, 7:30 p.m.

Sat. Oct. 21, 4:00 p.m.

PWYC: *"Pay What You Choose" suggested \$20, first-come, first-served tickets, sold only at the theater 6:30pm-7:30pm, before the performance.*

Fri. Oct. 20, 7:30 p.m.

OPENING NIGHT: *Join us for a cast party following the performance.*

Sat. Oct. 22, 5:00 p.m.

CAPTIONED PERFORMANCES:

Sat, 4pm Oct. 21 & 28,

Thurs. 7:30pm Nov. 2 & 9

WINE WEDNESDAY!: *Enjoy a FREE glass of wine on Wed. evening performances. Arrive early! Must be 21+ to consume alcohol.*

Wed. 7:30 p.m. Oct. 25, Nov. 1, Nov. 8

POST-SHOW TALK:

Stay after the show to discuss the play.

Fri. Oct. 27, 7:30 p.m.

Wed. Nov. 1, 1:30 p.m.

PLAY CLUB: *This enhanced subscription includes a digital copy of the script, an invitation to the First Rehearsal and a private post-show discussion, with wine and cheese, led by RTW Artistic Director, Suzan Fete. Must be a Play Club subscriber to participate.*

Sun. Oct. 29, 2:00 p.m.

PRE-SHOW TALK: *Artistic Director Suzan*

Fete leads a conversation at 6:45pm.

Fri. Nov. 3, 7:30 p.m.

SENSORY FRIENDLY PERFORMANCE:

a specially modified and relaxed performance for people with sensory sensitivities.

Wed. Nov. 8, 1:30 p.m.

AUDIO DESCRIBED PERFORMANCE:

Fri. Nov. 10 7:30 p.m.

Contact Community Engagement Manager Ryan Rehak (rrehak@r-t-w.com) for information on these community events.

PRIDE NIGHT

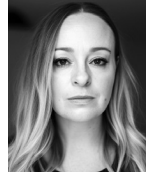
Fri. Oct. 27, 7:30 p.m.

SHELEADS: WOMEN IN BUSINESS NETWORKING NIGHT

Thurs. Oct 26, 7:30 p.m.

In Partnership with Professional Dimensions!

BIOGRAPHIES (cont.)



Jennifer Dobby – INTIMACY DIRECTOR

Jennifer Dobby is a local intimacy director/ choreographer, director, playwright, and script

consultant. Jenn most recently intimacy directed BOEING BOEING at SummerStage of Delafield this past July, and also holds Intimacy Direction season residencies at Waukesha Civic Theatre, Outskirts Theatre Co., and SummerStage of Delafield. Jenn is a former Dramatists Guild Fellow, and proud member of both the Dramatists Guild and Stage Directors and Choreographers Society. She teaches at Carroll University, where she is also the Chair of the Department of Visual, Interactive and Performing Arts. Enjoy this amazing production, and thank you for supporting the Arts!



Angeline Holtzman-Forbes – PROPS ASSISTANT

Angeline is a recent graduate from the University of Wisconsin

– Stevens Point with a BFA in Theater Design Technology with an emphasis in Costume Design. Her latest work was as a Properties Assistant on LAUGHS IN SPANISH at Milwaukee Chamber Theater. Scenic Apprentice for HELLO DOLLY, SUOR ANGELICA & GIANNI SCHICCHI, FELLOW TRAVELERS, ONCE UPON A MATTRESS at Seagle Festival.

BIOGRAPHIES (cont.)



**Amy Horst (she/they) –
COSTUME DESIGN**

Previously at RTW: A DIFFERENT MOON, THE BLUE ROOM, STOP KISS, TROJAN WOMEN,

SPINNING INTO BUTTER, BURN THIS, LUNA GALE, TOP GIRLS, THE ROOMMATE, ACTUALLY x2, NEAT (virtual). Amy is a grad student, parent, educator, and community member in addition to arts work. A naturalized cheesehead from the South, she has spent three decades and counting in “the biz.” They live in Milwaukee with their spouse and teenager, and enjoy hobbies such as sleeping, hugging, reading, swimming, and finding delight. For my Dad. Hail the Traveller!



**Jeffrey D. Kmiec~ –
SCENIC DESIGN**

Jeffrey D. Kmiec is an award-winning Production Designer and Art Director based in

Chicago, with a career spanning across the United States and Europe. Jeffrey holds an MFA from the University of Virginia. He is also a proud member of United Scenic Artists Local 829. For a comprehensive look at Jeffrey’s portfolio and further details about his work, please visit jeffreydkmiec.com

Tony Lyons – TECHNICAL DIRECTOR

This season marks Tony’s eighteenth year as Technical Director for Renaissance Theaterworks. In all, he has worked in various capacities on over forty-five Renaissance productions over the last twenty-nine years. Tony is also technical director for Wild Space Dance Company. Tony has worked for Alverno Presents

(R.I.P.), Skylight Music Theatre, Milwaukee Chamber Theatre, and Bialystock & Bloom (R.I.P.). In a parallel universe, Tony is a partner in a small custom carpentry firm.



**Jayne Regan Pink –
MOVEMENT DESIGN**

Born in London, Jayne studied at the Royal Ballet School. Hailed as one of the finest dramatic

dancers of her generation, she serves on the faculty of the Milwaukee Ballet where her partner, Michael Pink, is the Artistic Director. Jayne has traveled internationally as a ballet coach and worked as a dialect coach, choreographer, and movement director. Her local credits include HAPPY DAYS and NEAT (Renaissance Theaterworks); MATILDA, CHITTY CHITTY BANG BANG, ELEPHANT AND PIGGIE, and URINETOWN (First Stage Children’s Theater); and HAPPY NOW, THE NORMAN CONQUESTS, and A CHRISTMAS CAROL (Milwaukee Rep). When her son, Max Pink, was cast in RUSSIAN TRANSPORT (Renaissance Theaterworks 2018), she became more involved with the theater and served on the board of directors.



**Josh Schmidt~ –
SOUND DESIGN**

Josh Schmidt returns to Renaissance after recently designing COST OF LIVING, THE HOW

AND THE WHY, ACTUALLY, and ROSE. On Broadway his designs include THERESE RAQUIN, HOUSE OF BLUE LEAVES, BRIGHTON BEACH MEMOIRS,

BIOGRAPHIES (cont.)

and many others. Josh has designed over 300 productions for companies including Lincoln Center, Atlantic Theatre, Roundabout, Second Stage, (NYC); Steppenwolf Theatre Company, Writers' Theatre, Northlight Theatre (CHICAGO); Stratford Shakespeare Festival (Ontario, Canada); Ford's Theatre (Washington DC); and 20 Seasons at American Players Theatre (Spring Green, WI). Film credits include the upcoming release of THE END (Final Cut for Real/Neon).

Noele Stollmack[~] – LIGHTING DESIGN

Noele is incredibly happy to be back at Renaissance Theatreworks having designed the lighting for TIDY, THE CAKE, NEAT, PHOTOGRAPH 51, NATIVE GARDENS, THE VIOLET HOUR, THE KREUTZER SONATA and THE BALLAD OF EMMETT TILL. Her scenery and lighting design includes, FLYING DUTCHMAN, GIULIO CESARE IN EGITTO, ALBERT HERRING, DIDO and AENEAS, VENUS AND ADONIS, RIO DE SANGRE, MACBETH, TRISTAN UND ISOLDE and MAGIC FLUTE (Florentine Opera), RAPE OF LUCRETIA (Toledo Opera), PAGLIACCI (Opera Columbus), MIRANDOLINA (Milwaukee Rep), lighting and scenic realization for Meredith Monk's international tours of MERCY & IMPERMANENCE. Noele's lighting has appeared onstage at Carnegie Hall, The Brooklyn Academy of Music, Sydney Opera House, The Library of Congress, Opera Ontario, Opera Pacific, Portland Opera, Vancouver Opera, Madison Opera, Nashville Opera, First Stage Children's Theatre, American Players Theatre, Jeff Daniel's Purple Rose Theater and Skylight Music Theatre. As Lighting Director for Houston Grand

Opera, she supervised lighting for over 50 operas and designed such productions as Andrei Serban's ELEKTRA, Dr. Jonathan Miller's Der Rosenkavalier, AIDA and the world premieres of HARVEY MILK, DESERT OF ROSES and DRACULA DIARY.



Beck Trumbull (they/ them) – ASST. STAGE MANAGER

Beck Trumbull is thrilled to be making their RTW stage management debut with WITCH! Originally from Northeast Ohio, they are now proud to call Milwaukee home. Select credits include LLAMA LLAMA RED PAJAMA LIVE! (National Tour; SM/Tour Manager) and ELEPHANT AND PIGGIE'S "WE ARE IN A PLAY!" (ASM) at Bay Area Children's Theatre; Spiegelent at SummerScape at Bard College (ASM); and THE PLAY THAT GOES WRONG (ASM) at Florida Studio Theatre.



Bailey Wegner* (she/her) – PRODUCTION & STAGE MANAGER

Bailey Wegner joined Renaissance Theaterworks in the summer of 2017. Her production and stage manager credits with RTW include THE CAKE, BELONGING, ACTUALLY, THE ROOMMATE, ANNIE JUMP AND THE LIBRARY OF HEAVEN, and PHOTOGRAPH 51, as well as four BRINK New Play Festivals. Assistant stage manager credits include HAPPY DAYS, TOP GIRLS, and RUSSIAN TRANSPORT. Bailey has also worked with Milwaukee Chamber Theater, Wild Space Dance, and Kohl's Wild Theater.

STAFF BIOGRAPHIES (cont.)



Lisa Rasmussen (she/her) – MANAGING DIRECTOR

This season is Lisa’s sixteenth at RTW which means she has been serving the unique

mission of “theater by women, for everyone” for more than half of its life! Lisa started as RTW’s Development Director in 2008. In December 2017,

Lisa was promoted to Managing Director. Since then, she has overseen 15 full productions, five BRINK New Play Festivals and the move to this beautiful performance space (the most accessible theatre in town). Lisa received her BA in Theater and Psychology from Cardinal Stritch University in 2003. Lisa loves living in Bay View with her husband Jake, daughter Anna and puppy Bjorn.

RENAISSANCE THEATERWORKS STAFF

- Artistic Director Suzan Fete
- Managing Director Lisa Rasmussen
- Marketing Director Sarah Kriger Hwang
- Development Director Dana Dossett
- Artistic Associate Jayne Regan Pink
- Marketing Manager Maria Pretzl
- Production Manager Bailey Wegner
- Community Engagement Manager Ryan Rehak

RENAISSANCE THEATERWORKS BOARD OF DIRECTORS 2023-2024

EXECUTIVE COMMITTEE

- President: Ginny Finn
- Treasurer: Laura Arnow
- Secretary: Sofia N. Ascorbe

DIRECTORS

- | | | |
|----------------------|---------------------|---------------|
| Mary Beth Alvarez | Patti Keating Kahn | Vivian Moller |
| George Dionisopoulos | Joanne Lipo Zovic | Jodi Ristau |
| Susan Frautschi | N. Lynnette McNeely | Beth Weirick |

ABOUT RENAISSANCE THEATERWORKS

Renaissance Theaterworks, “Theater by Women for Everyone”, is Milwaukee’s first, women-founded, women-run professional theater company. Dedicated to promoting the work of women onstage and off, Renaissance Theaterworks creates theater that connects with all people – and what it means to be human – through vibrant, visceral storytelling.

Founded in 1993 by Suzan Fete, Marie Kohler, Raeleen McMillion, Jennifer Rupp and Michele Traband, Renaissance Theaterworks is the nation’s second oldest theater company with a mission to promote gender parity in theater. Renaissance Theaterworks produces outstanding, artistically unsurpassed theater that makes audiences feel more, think harder, laugh louder.

Renaissance Theaterworks is now a resident theater company at 255 S. Water Street. This bold move has allowed us to continue on a positive trajectory for many years to come. Administrative offices remain on the 5th floor of the Broadway Theatre Center.

Renaissance Theaterworks is a member of the Milwaukee Theater District, National New Play Network, Playwrights Welcome, Theatre Communications Group, Hispanic Professionals of Greater Milwaukee, Visit Milwaukee, World Premiere Wisconsin and the Historic Third Ward Association. In 2018, Renaissance Theaterworks hosted Statera Con III and supports Statera Arts.

Office: 158 N. Broadway 414-273-0800 | **Performances:** 255 South Water St.

Tickets: R-T-W.com or **Box Office:** 414-278-0765

Mon.-Fri. 12-5pm and 2 hours before every performance.

Join our email list at **R-T-W.com** and follow us on social media!



Established to recognize those who have made an estate or planned gift to Renaissance Theaterworks, Inc.

Your forethought will ensure long-term viability for RTW’s unique mission, as well as the continuation of our uninterrupted debt-free history.

Legacy gifts can be made through bequests, life insurance, IRAs or other planned giving arrangements.

Have you already included Renaissance Theaterworks in your planning?

Please let us know!

Join Now!

Interested in learning more?

Contact Dana Dossett, Development Manager at DDossett@r-t-w.com

GREEN ROOM GROUP

Our Green Room Group is an exclusive circle of our major individual donors. They receive special benefits and behind-the-scenes access to the fun and excitement of Renaissance Theaterworks. As a Green Room Group member you play a huge role in our mission. Your gift supports gender balance. You enable us to hire the finest actors and directors who bring us extraordinary, sold-out performances. If you appreciate the work we do and want to become a part of it, now is the time to contribute! Contact us today to learn more.

Anonymous (3)
 George Affeldt
 Dr. Mary Beth Alvarez
 Catherine Anderson
 Patricia & David Anderson
 Laura & Mike Arnow
 Sarah Beckett
 Liz & Scott Bickley
 Amy & Dylan Bolin
 Amy & Nate Cade
 Judges Jean & John DiMotto
 George & Sandy Dionisopoulos
 Mike Drescher
 Donna Drosner
 Suzan & Jeff Fete
 Virginia Finn
 Susan & Timothy Frautschi
 Pamela Frautschi
 Kathy & Stewart Friend
 Katie Heil

Kathleen & John Hickey
 Susan Holmes
 Sarah & Vlad Jelencic
 Patricia Keating Kahn & Chuck Kahn
 Brandy Kline & Michael Anderson
 Marie Kohler & Brian Mani
 Leslie Kohler
 Mary Korkor
 Pam Kriger
 Diane & James Kuntzelman
 Sandra Laedtke
 Laura Lindner
 Joanne Lipo Zovic
 Marianne and Sheldon Lubar
 Sherry & Rick Lundell
 Barbara Manger & Bill Lynch
 Mary Jo & Guy McDonald
 Lynnette McNeely

Ms. Vivian Moller
 Lori Morse & Robert Gardenier
 Chris Mortensen
 Kate & Ken Muth
 Joyce and H. Pabst
 Dr. David Paris
 Lois & Richard Pauls
 Mary & Ross Read
 J. Michael Reavis
 Susan Riedel
 Jodi Ristau
 Jennifer Rupp & Richard Chudnow
 Molly & Jeff Schissler
 Jan Serr & John Shannon
 Lois Smith
 Patricia & Jerry Styberg
 Elizabeth Weirick
 Sandra Zingler
 Judith Marie Zwirlein

WHAT IS THE **Green Room Group?**

In theater, the green room is a special space for an actor to focus, connect with fellow artists, prepare for the next scene, and even celebrate after a show.

At Renaissance Theaterworks, the “Green Room Group” is composed of Milwaukee’s most vibrant cultural supporters, and our largest, most steadfast donors. They set the scene for us to connect directly with the community, produce high quality, diverse stories, and celebrate as we go!

Green Room Group members gain *behind-the-scenes* insights on how we harness our **artistic** and **financial resources** to create moving theater.

Members are also invited to special events like the **First Rehearsal** of each production to hear the cast read the script aloud for the first time and the **Opening Night reception** to raise a glass with us and mingle with the creative team.

MEET US IN THE
Green Room!

**CONTACT
 DANA DOSSETT**

Development Manager
 DDossett@r-t-w.com

DONORS

Renaissance Theaterworks gratefully acknowledges the following individuals and organizations for their generous support. Donations listed were received between July 1, 2022 and September 29, 2023. Make a gift today by visiting r-t-w.com.

\$100,000+

United Performing Arts Fund

\$10,000+

Laura & Mike Arnow

Bader Philanthropies Inc.

Brico Fund

George & Sandy

Dionisopoulos

Suzan & Jeff Fete

Susan & Timothy Frautschi

Greater Milwaukee Foundation

Herzfeld Foundation

Greater Milwaukee

Foundation's Judith A. Keyes

Family Fund

National Endowment for the Arts

J. Michael Reavis

Shubert Foundation

Stafford Rosenbaum, LLP

Bert L. & Patricia S. Steigleder
Charitable Trust

Sandra Zingler

\$5,000+

Anonymous (2)

Chicago Community Trust

Judges Jean & John DiMotto

Ralph Evinrude Foundation

FEMA

Marie Kohler & Brian Mani

Marianne & Sheldon Lubar

Sherry & Rick Lundell

Milwaukee County CAMPAC

Milwaukee Arts Board

Nonprofit Management Fund

Jane Bradley Pettit Foundation

Jodi Ristau

Ruth Arts

Jan Serr & John Shannon

Wisconsin Arts Board

\$1,000+

George Affeldt

Dr. Mary Beth Alvarez

Catherine Anderson

Patricia & David Anderson

Sarah Beckett

Liz & Scott Bickley

Amy & Dylan Bolin

Amy & Nate Cade

Mike Drescher

Donna Drosner

Drosner Phillips Ristau Group
at Baird

Fiduciary Management, Inc.

Virginia Finn

Pamela Frautschi

Kathy & Stewart Friend

Gardner Foundation

Greater Milwaukee

Foundation's Briggs &
Stratton Fund

Greater Milwaukee

Foundation's Colton
Charitable Fund

Greater Milwaukee Assn. of

Realtors Youth Fnd. Inc

Heil Family Foundation

Kathleen & John Hickey

Susan Holmes

Sarah & Milt Hwang

Sarah & Vlad Jelencic

Patricia Keating Kahn & Chuck
Kahn

Kirsten Johnson & Andrew
Kerr

Brandy Kline & Michael
Anderson

Leslie Kohler

Mary Korkor

Pam Kriger

Diane & James Kuntzelman

Sandra Laedtke

Laura Lindner

Joanne Lipo Zovic

Barbara Manger & Bill Lynch

Mary Jo & Guy McDonald

Lynnette McNeely

Vivian Moller

Lori Morse & Robert Gardenier

Chris Mortensen

Kate & Ken Muth

Charles D. Orggiesen
Foundation

Joyce and H. Pabst

Dr. David Paris

Lois & Richard Pauls

Peck Foundation, Milwaukee

Clare M. Peters Charitable
Trust

Mary & Ross Read

Susan Riedel

Jennifer Rupp & Richard
Chudnow

Molly & Jeff Schissler

Lois Smith

Patricia & Jerry Styberg

Elizabeth Weirick

Windhover Foundation

Wisconsin Humanities Council

Woman's Club of Wisconsin
Foundation

Judith Marie Zwirlein

\$500+

Erin Anderson

Janine Arseneau

Daniel D Blinka

Jill Broekhuizen

Diane & David Buck

Brenda Andrews & James
Cauley

Ellen & Joe Checota

Catherine & Mario Costantini

Patricia D'Angelo

Margaret Dethloff

Sally & Al Ferguson

Kirsten & Bill Finn

Sarah Ford and Randall Klumb

Danni and Shel Gendelman

Memorial Endowment

Laura Gordon

Barbara Haig & Daniel Schley

Anne Hamilton Geiffuss &
Frederick Geiffuss

Margarete & David Harvey

Mary & Mark Hollister

Bruce Johnson

Annie Jurczyk

Donna Kleczka

Barbara & Dennis Klein

Lola & Bob Loepfe

Joan Lubar & John Crouch

Lee Marquardt

Sarah McEneany & Robert
Smith

Jane O'Connell

Kari Pietsch-Wangard

Candy & Bruce Pindyck

Jayne Regan Pink & Michael

Pink

Nancy Pinter

Devon & John Pittman

Carol and Kevin Schuele

DONORS (cont.)

Rebecca Schultz
Pamela Seccombe
Janine & Bruce Smith
Anne & Gary Summers
Carolyn Sweers
Patricia Van Alyea
Linda Benfield & Steve Wallace
Mary Wegener
Gwendolyn & William Werner
Joan Wiegand
Patricia Williams
Kim Wynn

\$250+

Actors' Equity Foundation
Elizabeth A. Amato
Anonymous
Sofia Ascorbe
David Berg
Marcia Brooks & Edward
Hammond
Mary Jo Burgoyne
Linda & Thomas Burke
Laurie & Peter Byrne
Chris Calvelli
Sharon & Mark Cameli
Deborah & David Cecsarini
Mary & James Connelly
Christy D'Angelo
Gabrielle Davidson & Rob Lyon
Mary Jo & Tom Dempsey
Anne DiMotto
Carol Z. Dolphin
Diane & Robert Donohoo
Dana & Corey Dossett
Chip Duncan
Linda Edelstein
Judy & James Findling
Amy & Andrew Funk
Idy Goodman
Sheila & Harry Gustafson
Katie Heil
Margaret Henningsen
Angela Jacobi
Bett Jacquart
Jacob Janssen
Alyce & Paul Katayama
Katherine & Vincent Katter
Elizabeth Levins
Sue & Greg Lochen
Mary McCormick & Timothy
Hawks
Sara & Howard Miller
Theresa & Bob Muselman
Holly & Gregory Orłowski

Jill Anna Ponasik & William H.
Bradley
Mary Pretat
Amy Rabideau Silvers & Joe
Silvers
Christine Radiske & Herbert
Quigley
Lynn Rix
Emily Robertson
LindaGale Sampson
Susan & Michael Schall
Judith & Bob Scott
Eileen & George Stone
Kimberly Stoner & Cory Krivitz
Linda & Thomas Streifender
Michael Sullivan
Nici Teweles
Joy Towell
Sheryl Van Haren
Susan Vetrovsky & Michael
Goldstone
Donna & Jerry Walsh
Jenny Wanasek & Mark
Weinberg
Adrienne & Larry Waters
Marilyn White
Lani Williams & Earl Potter

\$100+

Libby Amato
Christine Anderson
Joy & Steve Appel
Erica Arrington
Mary and Larry Bandor
Aliza Baran
Brian Bauman
Marta and Marc Bianchini
Dr. Barry Blackwell
Holly Blomquist
Julie and William Bonnell
June & Jim Buskel
Jason Buskel
Timothy Butts
Doris Carroll
Mary Belle & Thomas Chatton
Cecile Cheng
Jane & Stephen Chernof
Eleanor and Michael Cotey
Kathleen Allen Crocker
Barbara Dittl
Jennifer Dobby
Sharon Dossett
Barbara Duffy & Donn Preston
Sandy Duffy
Dr. Eric Durant

Anne Brower & Jane Earle
Cecile & Dennis Engel
Cody Estle
Michael Evans
Kevin Flaherty
David Flores
Amy Funk
Patricia Gahl & Gregory Polak
Peter Goldberg
Karen Gotwalt & Ronald Reitz
Stephanie Govin-Matzat
Sandy & Mark Grady
Nancy & Reed Groethe
Katherine Grogan
Charles Grosz
Matthew Groth
Michael Hamilton
Diana & Ronald Hanks
Lisa & Michael Hatch
Alice Hatzenbeller
Linda Heintz
Mary Hessel
Cecilia & Doug Hillard
Robert Hirschi
Deborah & David Hoffman
Victoria Hudziak
Darryl Huennekens
Cathy Jakicic
Kristine Jensen
Paula John
Annie Jurczyk
Carol Justin
Marcella Kearns
Edward Kelly
Demaris Kenwood
Kathi Koenig
Maureen and Daniel Konkol
Konrad Kuchenbach
Frances Kulutbanis
Linda Laarman
James & Charmaine LaBelle
Judy & Norm Lasca
Sally Lemke
Justine Leonard
Sheri & Lloyd Levin
Paula Lewein
Natalie & Gary Longworth
Lynn Lucius & Richard Taylor
A.J. Magoon
Norman and Sherry Malmon
Judy Martel
Dr. Lisa Wehr-Maves & Dr.
Matthew Maves
Maureen McAvoy
LaVerne McCoy

DONORS (cont.)

Elaine McDermott
Raeleen McMillion
Cara McMullin
Wendy Moeller
Pat Moldenhauer
Patricia & Mark Monroe
Cindy Moran & Todd Broadie
Andrew Muriuki
John Murtaugh
Ann Navin
Donna Neal
Jane Nicholson
Marjorie Nixon
Christine and James O'Brien
Kathy & Alan Olsen
Joseph Pabst
Gerry Pas
Paula Penebaker
Pam Percy
John Peters
Janet & Randy Peterson
Teresa & Michael Prattke
Patrick Rath
Anna & Dan Robbins
Karyn & David Roelke
Jinnene Ross
Annemarie Sawkins
Robert Schellhammer and
Maureen Holt
Carole & Joe Schlangen
Laura Schnicke & Robert Mohr
Ruth Schudson
Brooke Schultz
Marlene "Micki" Seinfeld
Carney Silberg
Patrick Small
Minna & Mark Smith
Judith & Jerrel Stanley
Nancy Dahms Steller & Lyle
Steller
Lena Stephenson
Richard Stone
Sandra Strawn

Karen & Sandy Swartzberg
Virginia and John Taucher
Tawnie Thompson
Sara Toenes
Sophia Angela Topetzes-
Strelka
Josie Trettin
Catherine Washabaugh
Phyllis Wax
Carole and Bill Wenerowicz
Carol White
Sandra Wiegand
Margaret Wilber
Maxine Wishner
Mary and Roger Wolverton
Carolyn Wood
Herbert Zien

\$50+

June & Paul Ambro
Diane Barton
Amy Biersteker
Ann Bowe
Jeanette Braun
Debra Brehmer
Rick Burbey
Robin Burns
Mary Jo & John Coffee
Flora Coker
Patricia & Phillip Crump
Mary & Richard Cywinski
Cynthia Dicamelli
Elizabeth & Peter Dietz
Rick and Miriam Falk
Mary Alice Fifer
Patty Francis
Paula M Garcia
Will Graft
Danielle Ippolito
Karen Johnson & James Toth
Judith and William Kay
Sarajane and Robert Kennedy
Richard Knoedler

Linda J Nielsen Korducki
Karen & Dennis Leyer
Nicole Magnusson
Tara Mallen
Patricia Martin
Marc Mitchell
Bruce Murphy
Pat O'Connell
Francisca A Olmedo-Estrada
Lynn Preston
Darlene Roberts
Carla Roden
Linda Roethlisberger & Dennis
Hennessey
Brigitte Salver & Fay Sanders
Ellen Friebert Schupper
Pam Shy
Shayne Steliga
Linda Stephens
Susan Stewart
Christine Straw
Julia Vosper
Yvonne Wagner
Judge Jeff & Dyan Wagner
Josef Wantschik
Dean Wegner
Marie Weiss
Dawn Wenzell
Nick Werner
Christine Yundem

In-Kind Donors

Cooper's Hawk
Florentine Opera Company
Sarah & Milt Hwang
Milwaukee Ballet
Next Act Theatre
Outskirts Theatre Company
Jayne & Michael Pink
Traveling Lemur Productions,
LLC
Skylight Music Theatre
Julia & David Uihlein

ABOUT UPAF

Each year, more than 30,000 individuals, corporations and foundations in greater Milwaukee annually support the UPAF annual campaign, making it one of the nation's largest united arts funds. In addition to raising and allocating operating funds, UPAF is enhancing its value to the community, donors and performing arts by serving as a community wide resource for developing the excellence, reputation and impact of our performing arts.

The hottest ticket of this holiday season!

the mousetrap



by
agatha
christie

Nov 22 - Dec 17, 2023

Directed by Mary MacDonald Kerr

Featuring Lillian Brown, Josh Krause, Rudy Galvan, Margaret Casey, Doug Jarecki, Libby Amato, Jonathan Gillard Daly and Casey Hoekstra

From Agatha Christie comes a world-famous murder mystery with a thrilling twist ending. Seven suspicious strangers, snowed in together, must be on the lookout for a murderer in their midst. This clever whodunnit, the world's longest-running play, is a perfect theatrical gift for the holiday season.

Tickets: (414) 278-0765 | nextact.org | 255 S Water St, Milwaukee



Up Next at  Renaissance
THEATERWORKS



**THE
WOLVES**

A COMING-OF-AGE DRAMA BY
SARAH DELAPPE

Jan 21 - Feb 11 2024

-Previews Jan 19 & 20-

In Partnership with
First Stage Young
Company!

