

# PLAYBILL



A COMING-OF-AGE DRAMA BY  
*SARAH DELAPPE*

Jan 21 - Feb 11, 2024

-Previews Jan 19 & 20-



*renaissance*



THEATERWORKS



UNITEDPERFORMINGARTSFUND



UPAF IS FOR THE PERFORMING ARTS that you are here to enjoy today. We're for thousands of local artists in the spotlight and behind the scenes. We're for you — the audience — experiencing excitement, inspiration and connection. We're for Milwaukee, Tosa, Waukesha, Racine & beyond. We're for being together, surrounded by the magic of music, dance, song and theater.

We're for raising our community up.

You're for the arts too, so please join us to ensure that our world-class performing arts groups make a full recovery.

▶ DONATE TODAY. UPAF.ORG/DONATE

MUSIC | DANCE | SONG | THEATER

Milwaukee Ballet, Marie Collins, Photo by Mark Frohna. Skylight Music Theatre, Raven Dockery, Photo by Mark Frohna.



presents

# THE WOLVES

BY SARAH DeLAPPE

JANUARY 21 – FEBRUARY 11, 2024

In Partnership with First Stage Young Company  
Preview Performances January 19 & 20

Directed by  
**ELYSE EDELMAN**

Production Manager  
& Stage Manager  
**BAILEY WEGNER\***

Asst. Stage Manager  
**SYDNEY SMITH**

Technical Director  
**TONY LYONS**

Scenic Design  
**DOUG DION**

Lighting Design  
**COLIN GAWRONSKI**

Sound Design  
**BRANDON REED~**

Props Design  
**JIM GUY**

Costume Design  
**JASON ORLENKO~**

Associate  
Costume Design  
**NORA SAMMONS**

Wardrobe Supervisor  
**SHELBY KAISHIAN**

Movement Design  
**JAYNE REGAN PINK**

Soccer Coach  
**LAILA ESLAMI**

Deck Supervisor  
**NAT GOELLER**

Master Electrician  
**KATIE ANDERSON**

Board Operator  
**FAITH LENSMTIH**

Scenery Construction  
**TONY LYONS,  
TIMOTHY LINN**

Scenic Painting  
**AMANDA MARSALA**

Show Mascot  
**RAPINOE T. WOLF**

House Managers  
**CAROLINE NORTON, AUDWIN SHORT, BARBARA SLAGTER, KAYLENE HOWARD**

~ Member of United Scenic Artists Local 829 \*Member of Actor's Equity Association

This play will run approximately 90 minutes with no intermission

"The Wolves" is presented by arrangement with Concord Theatricals on behalf of Samuel French, Inc. [www.concordtheatricals.com](http://www.concordtheatricals.com)

World premiere produced by The Playwrights Realm (Katherine Kovner, Artistic Director / Roberta Pereira, Producing Director) on September 8, 2016 and remounted on December 5, 2016 by special arrangement with Scott Rudin and Eli Bush. Originally presented by New York Stage and Film and Vassar in the Powerhouse Season, Summer 2016. Playwrights Horizons Theater School produced a workshop of The Wolves in 2015 in association with Clubbed Thumb, where the play had been developed previously.

Winner of the 2016 Sky Cooper New American Play Prize at Marin Theatre Company, Mill Valley, CA  
Jasson Minadakis, Artistic Director; Keri Kellerman, Managing Director  
Produced by Lincoln Center Theater, New York City, 2017

### SEASON SPONSORS

Laura & Mike Arnow,  
Jan Serr & John Shanon, Herzfeld Foundation, Shubert Foundation,  
Bert L & Patricia S. Steigleder Charitable Trust

### PRESENTING SPONSOR

Donna and Donald Baumgartner

### SHOW SPONSORS

Marianne and Sheldon Lubar



## CAST

#11 Midfield	Maya Thomure°
#25 Defense, Captain	Alice Rivera°
#13 Midfield	Josie Van Slyke°
#46 Bench	Reiley Fitzsimmons°
#2 Defense	Madison Jones°
#7 Striker	Ryan Bennett°
#14 Midfield	Lorelei Wesselowski°
#8 Defense	Natalie Ottman°
#00 Goalie	Elena Marking°
Soccer Mom	Marcella Kearns*
Swing	Samika Sabesan°
Swing	Mia Lutz°

*\*Member of Actors' Equity Association*

*° Students of First Stage Young Company, an award-winning training program for advanced high school actors*



## TIME/PLACE

An indoor soccer field somewhere in suburban America. Winter, Saturdays. 2018.

## SPECIAL THANKS

Bat Stitch Crochet, Calvin Deutsch, Timothy Linn, First Stage Costume Shop, Kelly Johnson Foundation, Milwaukee Public Schools Department of Strategic Partnerships, Joel Penegor, Dana Rochester, Nate Schardin, Noelle Schmitt, Shaky Hands Printing, Uihlein Soccer Park, UW-Milwaukee Costume Department, UW-Parkside Costume Department, WSC - Women's Soccer Club, Leslie Vaglica

**PROUD MEMBER**



## DIRECTOR NOTES

Sarah DeLappe was navigating her own young adulthood years when she began writing *THE WOLVES*. She was inspired during a visit to the “Here and Elsewhere” art exhibit at the New Museum in New York. Featuring works from several Arab countries, selected work vividly portrayed oppressive conditions and war-torn environments faced by the artists. The contrast between the emotionally charged exhibit and the disconnected attendees fueled her writing. As she penned *THE WOLVES*, a through-line of war emerged prominently, and she began envisioning the play as a cinematic “war movie.”

In *THE WOLVES* each scene portrays the young women preparing for a unique kind of battle on and off of the soccer field. We witness not the game itself, but the pivotal moments preceding it — the anticipation, the rigorous physical training, the empowering pep talks. It’s about positioning ourselves both on the field for victory and off the field for success in various pursuits.

*THE WOLVES* rejects stereotypical roles, presenting a story where young women aren’t relegated to being girlfriends, daughters, or mere objects of desire, but celebrated as athletes — asserting their ownership and strength over their bodies. In a world marked by chaos and complexity, young women confront immense challenges and pressures not of their own making.

As young women, does our collective strength shine brightest when we embrace a pack mentality? By giving free rein to our inner beast on the field and in our work, can we learn to unleash it beyond the game as well?

— Elyse Edelman, Director

A QR code is positioned in the upper left quadrant of the image. Below it, a soccer ball rests on a grassy field. In the upper right, the logo for "THE WOLVES" is displayed, featuring a soccer ball above the word "THE" and "WOLVES" in a stylized font, with "BY SARAH DELAPPE" written below. To the right of the QR code, text reads "Scan the QR code to access digital versions of" followed by a bulleted list: Audience Guide, Sensory Guide, Accessibility Guide, and Digital Playbill.

Scan the QR code to access digital versions of

- Audience Guide
- Sensory Guide
- Accessibility Guide
- Digital Playbill



## THE CHARACTERS

### #11 (MIDFIELD)

BRAINY. MORBID. BUDDING ELITIST. THOUGHTFUL.

### #25 (DEFENSE)

CAPTAIN. CLASSIC (EX)COACH'S DAUGHTER. PROBABLY A BETTER LEADER THAN A PLAYER.

### #13 (MIDFIELD)

STONER. OLDER POT DEALER BROTHER. ENJOYS BEING A LITTLE WACKY.

### #46 (BENCH/STRIKER)

NEW GIRL. AWKWARD. DIFFERENT. JUST WANTS TO FIT IN.

### #2 (DEFENSE)

INNOCENT. UNLUCKY. CARES A LOT ABOUT OTHER PEOPLE, BUT DOESN'T ALWAYS KNOW HOW TO HELP.

### #7 (STRIKER)

TOO COOL FOR SCHOOL. SARCASTIC. PRONE TO SWEARING. PUSHES AGAINST SOCIETY'S EXPECTATIONS.

### #14 (MIDFIELD)

#7'S INSECURE SIDEKICK. JUST SWITCHED TO CONTACTS. WANTS TO FORGE HER OWN PATH, BUT DOESN'T KNOW WHERE TO START.

### #8 (DEFENSE)

CHILDLIKE AND DETERMINED TO STAY THAT WAY. A LITTLE IGNORANT OF SOCIAL ISSUES.

### #00 (GOALIE)

INTENSE PERFORMANCE ANXIETY, PERFECTIONIST, HIGH ACHIEVER. QUIET, BUT THAT DOESN'T MEAN SHE DOESN'T HAVE OPINIONS.

## FOR YOUR INFORMATION

**HEALTH SAFETY:** With the prevalence of COVID-19, flu and other viruses, we support and encourage your personal decision to wear a mask. If you feel unwell, please opt to stay home. RTW will handle health-related cancellations on a case-by-case basis.

**FOOD & BEVERAGE:** Drinks may be taken into the theatre, but food is not permitted.

**ENTERING & EXITING THE THEATER SPACE:** Please use walkways to access the seating areas and refrain from crossing over the stage.

**CANCELLATION POLICY:** Renaissance Theaterworks does not cancel performances due to inclement weather, nor do we offer refunds due to weather.

**LATECOMER POLICY:** Latecomers will not be seated until an appropriate time in the performance. Seating may not be permitted 30 minutes after the start of a performance. If you are running late, please call the Ticket Office at 414-278-0765.

**HEARING LOOP LISTENING SYSTEM:** The theater is equipped with an advanced technology Hearing Loop listening system. The system will broadcast directly to those with T-coil hearing aids. Portable assistive listening devices for conventional listening are available and may be checked out at the Concessions Counter.

**ELECTRONIC DEVICES:** NO cameras or recording devices of any kind (including smartphones) are allowed to be used in the theater. Please turn off all electronic equipment.

**STUDENT, GROUP, & SENIOR DISCOUNTS:** Please contact the Ticket Office at 414-278-0765.

## AUDIO LOOP INSTRUCTIONS

**T-Coil Listeners:** Simply set your hearing device to the Loop setting and enjoy the show.

**Conventional Listeners:** Check out a receiver and headphone set at the Concessions Counter. The House Manager can instruct you on its use, but here are some simple instructions.

Like a transistor radio, the small box has an off-on and volume knob; turn on and adjust for your comfort level. You will need to be in the seats to receive the Loop signal.

The box works directionally; that is, it matters which way it is pointing.

- In most of our seating, the box works best when held up straight, with the volume knob on top, and the flat back pointing toward the stage.
- In the front rows, you will get the strongest signal with the box laying flat on your leg, with the flat back pointing straight to the floor.

Please ask the House Manager for assistance, if needed. We hope you enjoy the show.

## BIOGRAPHIES



### Elyse Edelman – DIRECTOR

Elyse is thrilled to return to Renaissance Theaterworks to direct THE WOLVES by Sarah

DeLappe. Working for such a mission-driven company brings her great fulfillment. Previous credits at RTW include THE DROWNING GIRLS (Bessie), TOP GIRLS (Angie), and THE HOW AND THE WHY (Rachel). Wisconsin theater credits include multiple productions with Forward Theater Company, Milwaukee Chamber Theatre, Third Avenue PlayWorks, First Stage, In Tandem Theatre, American Players Theatre, Milwaukee Repertory Theater, and Door Shakespeare. Some other regional acting credits include productions with The Guthrie, Park Square Theatre, People's Centre Theatre (Minneapolis/St. Paul), Utah Shakespeare Festival (Cedar City), Chicago Children's Theatre, The Accidents (Chicago), and Riverside Theatre (Iowa City), among others. Elyse is also an educator and develops curriculum for a number of professional theaters, schools, and youth correctional facilities. She is on the core faculty of First Stage Young Company and serves on the Advisory Company at Forward Theater in Madison, Wisconsin. Training: University of Minnesota/Guthrie Theater BFA Actor's Training Program. Website: [www.elyseedelman.com](http://www.elyseedelman.com)



### Maya Thomure – #11 MIDFIELD

Maya is ecstatic to be involved in this production of THE WOLVES! She is a junior

at Whitefish Bay High School, and in her third year in First Stage's Young Company. Favorite performing credits include HENRY IV; PART I (Prince Hal), MACBETH (Witch Three), LAST STOP ON MARKET STREET (Ensemble), and A MIDSUMMER NIGHT'S DREAM (Peter Quince). Outside of theater, Maya plays the cello as a member of the Milwaukee Youth Symphony Orchestra. She is extremely grateful for her wonderful director Elyse Edelman, the entire team at Renaissance Theaterworks, and her fellow cast members for this lovely experience. AHWO!



### Alice Rivera – #25, DEFENSE, CAPTAIN

Alice is thrilled to be a part of THE WOLVES! Alice is a sophomore at Golda Meir High School.

Some of her past credits include: LITTLE WOMEN (First Stage), A MIDSUMMER NIGHT'S DREAM (First Stage), GRETEL! (First Stage) and NEWSIES (Skylight Music Theatre). Alice is a part of First Stage's Young Company and a member of The Rep's Teen Council. She also enjoys dancing and crocheting. Alice is ecstatic to be working on this show with Renaissance Theaterworks and would like to thank her friends and family for their continued support.



### Josie Van Slyke (she/her/hers) – #13 MIDFIELD

Josie Van Slyke is a junior at Golda Meir School and a member of the National Honor Society. Her previous credits include LITTLE WOMEN (Jo), A

## BIOGRAPHIES (cont.)

MIDSUMMER NIGHT'S DREAM (Puck), THE LEGEND OF ROCK, PAPER SCISSORS (Ensemble), THE VERY HUNGRY CATERPILLAR SHOW (Artist), and THE CAT IN THE HAT (Sally). Josie feels very grateful to be working with all these awesome ladies in her first production with Renaissance. She would like to thank her friends and family for their constant support and the teams at First Stage and Renaissance for this opportunity! AWHOH!



### **Reiley Fitzsimmons – #46 BENCH**

Reiley is a sophomore at the University School of Milwaukee and a 2nd-year at First Stage's Young Company acting program. She is the Vice President of her school's Thespian society and also has been a student of classical voice instructor Victoria Brasser-Vos for the last 9 years. Recent credits include THE LARAMIE PROJECT (USM), LITTLE SHOP OF HORRORS (USM), THE BIRDS (USM), and THE GRACIOUS SISTERS (First Stage/ Young Company). She wants to thank her director, Elyse Edelman, Young Company, and Renaissance Theaterworks for this opportunity.



### **Madison Jones (she/her) – #2 DEFENSE**

Madison Jones is a junior at Pius XI High School. She is involved in the theater and dance department at school, and has founded the school's Young Writer's Club. Past credits include: SIX: TEEN EDITION (Pius XI), 13: THE MUSICAL (Pius XI), THE

FORGOTTEN GIRL (First Stage), LAST STOP ON MARKET STREET (First Stage), MATILDA: THE MUSICAL (First Stage). Madison enjoys playwriting and crafting with friends. Huge thanks to Young Company for making this possible. Enjoy the show!



### **Ryan Bennett – #7 STRIKER**

Ryan is a senior at Homestead High School (HHS). She is an active member of the

Homestead Theater program, starring in many productions, and acting as co-president this year. She is also a member of both the International Thespian Society and the National Honor Society. Past performing credits include: HELLO DOLLY (Homestead High School), CINDERELLA (Homestead High School), THE LOTTERY (Homestead High School), ROSENCRANTZ AND GUILDENSTERN ARE DEAD (Homestead High School and First Stage), THE LARAMIE PROJECT (First Stage), THE LEGEND OF ROCK PAPER SCISSORS (First Stage), and SHE KILLS MONSTERS (Homestead High School). In her spare time Ryan plays piano and guitar, sings, writes songs and poetry, and reads the classics.



### **Lorelei Wesselowski – #14 MIDFIELD**

Lorelei is excited to make her debut performance with Renaissance Theaterworks in THE WOLVES. Most recently she was seen at First Stage as Imogene Herdman in THE BEST CHRISTMAS PAGEANT EVER: THE MUSICAL. Previous credits include THE

## BIOGRAPHIES (cont.)

SPONGEBOB MUSICAL FOR YOUNG AUDIENCES with First Stage (2023), CARMINA BURANA with Skylight Music Theatre and Milwaukee Opera Theatre (2019), and July in ANNIE with Skylight (2017). Lorelei is a fifth year member of the Danceworks Youth Performance Company and she plays steel pans with MYSO. As a senior at Milwaukee School of Languages, she's a fluent French speaker and she plays flute and bass guitar. She thanks her friends and family for their endless support.



### **Natalie Ottman (she/her) – #8 DEFENSE**

Natalie is ecstatic to be working on THE WOLVES, a show that is a radical and realistic representation of female adolescence. Natalie is a freshman at DSHA and a second year in Young Company. At DSHA she enjoys running with her cross country teammates after school. Favorite past credits include HAMLET and LITTLE WOMEN with First Stage and Milwaukee Rep's A CHRISTMAS CAROL in 2021 and 2022. You can see Natalie this spring in First Stage's ESCAPE FROM PELIGRO ISLAND. Finally Natalie would like to thank her friends and family for their continued love and support.



### **Elena Marking – #00 GOALIE**

Elena is incredibly excited to be a part of THE WOLVES! She is a junior at Franklin High School and part of the Young Company at First Stage. Recent credits include, A MIDSUMMER NIGHT'S DREAM (First

## A NOTE FROM THE ARTISTIC DIRECTOR

*Renaissance Theaterworks is thrilled to collaborate with First Stage's Young Company on our production of THE WOLVES — a project in the making since 2017.*

*First Stage is a National leader in creating theater for young people and the Young Company is an award-winning training program for advanced high school actors.*

*First Stage prepares their alumni to attend the finest conservatories in the US and abroad. Many of these artists, like THE WOLVES' director, Elyse Edelman, come back home to work right here in Milwaukee.*

*RTW is proud to bring the women of the Young Company front and center, to showcase their talent and play a small part in their future success.*

*We all benefit from First Stage. Because of their commitment to the transformative power of theater, Milwaukee is a community of artists and theater-lovers.*

*To put it another way, we live in a garden of artists because First Stage planted the seeds.*

*— Suzan Fete, Artistic Director*

## BIOGRAPHIES (cont.)

Stage), *LITTLE WOMEN* (First Stage), *THE GRACIOUS SISTERS* (First Stage), and *HENRY IV PART 1* (First Stage). She sends her love to her family, friends, and teachers who have provided unconditional support.



### **Marcella Kearns\* – SOCCER MOM**

Marcella is honored to return to Renaissance (RTW) for this collaboration after

BRINK's *RUNNING WITH COFFEE*. Artistic Associate of Forward Theater and core faculty of First Stage Young Company, Marcella is also a member of Actors' Equity Association, a former Fulbright Fellow, and a 2008 TCG Observership recipient. She holds an MFA in Acting from the University of South Carolina. Selected Wisconsin credits include Mrs. Hudson in *SHERLOCK HOLMES: THE BAKER STREET IRREGULARS* (First Stage), Frankie in *FRANKIE AND JOHNNY IN THE CLAIR DE LUNE* and Berthe in *BOEING BOEING* (MCT), Pickles in *LIFE SUCKS* (Forward Theater), and Mildred in *GORGONS* (RTW).

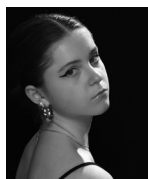


### **Samika Sabesan (she/her) – SWING**

Samika Sabesan is a student at Brookfield East High School. Samika is a part of her school's choir

and sings Soprano II. She is also captain of her school's Forensics Team in which she performs in the category "Solo Serious", and last year made it to Nationals with her acting piece. Additionally, Samika is part of the Milwaukee First Stage's Young Company.

Past performing credits include: *LES MISERABLES* (Burnsville High School Theatre), *NEWSIES JR* (Sunset Playhouse), and *MATILDA THE MUSICAL* (Waukesha Civic Theatre). Outside of performing, Samika is part of her school's National Honors Society, Math and STEM clubs, and volunteers through Awassa Children's Foundation.



### **Mia Lutz (she/her) – SWING**

Mia Lutz is absolutely thrilled to be a part of her first professional production. She's been

playing soccer for nine years and she intends to try out for her high school women's soccer league at Whitefish Bay high school. She is fifteen years old and hasn't been acting for too long, but is a quick learner and is very passionate about acting.



### **Doug Dion – SCENIC DESIGN**

Doug Dion is making his Renaissance debut with *THE WOLVES*. He lives and works in Spring

Green Wisconsin at American Players Theater, where he has been since 2017 working as the Assistant Technical Director (which means he helps make all the scenery). Previously he has worked at The Palace Theater in NH, Emporia State University in KS, and The Montana Repertory Theater in MT. In September, Doug got to marry his lovely wife Katharine, while Elyse (Director) officiated over their beautiful wedding. Their pup Jackaroni was confused by the whole event, but still knows that he's the one in charge in the household.

## BIOGRAPHIES (cont.)



### **Colin Gawronski – LIGHTING DESIGN**

Colin Gawronski is a lighting designer and theatrical technician native to Milwaukee who

has worked extensively with Danceworks, Inc, Milwaukee Chamber Theatre, Sunstone Studios and Black Arts MKE/ Bronzeville. Additional credits include Renaissance Theaterworks, Milwaukee Opera Theatre, Gina Laurenzi Dance Project, and In Tandem Theatre. Colin has also worked with the Sacramento Music Circus, Theatre Lila, Third Avenue Playworks and Forward Theater. Favorite productions include: *STEW*, *THREE OTHER SISTERS*, *DUTCHMAN*, *BLACK NATIVITY*, /maskə rād/, *SECRETS FROM THE WIDE SKY*, *DADDY LONG LEGS*, *THE GLASS MENAGERIE*, *SERENDIPITY*, *BIRDS OF NORTH AMERICA*, *LAMPS FOR MY FAMILY*, and *VAGABONDARE*. Give Love Always.



### **Jim Guy – PROPS DESIGN**

Jim is proud to be back for another Renaissance production. He has been a props professional

since joining The Cleveland Play House 43 seasons ago. In that time, he has propped an estimated 600 plays, musicals and operas. His work has appeared on and Off-Broadway, on tour, in print, on television, in museums and on the stages of theaters, opera and ballet companies nationally. Jim was Properties Director at Milwaukee Repertory Theater for 24 seasons. As time and temperament allows, he now freelances, teaches, consults and serves as Membership Co-Chair and Past President of the

Society of Props Managers (S\*P\*M), the international association of professional not-for-profit Prop Managers and Educators. He was born in a log cabin. He never tells a lie.

### **Tony Lyons – TECHNICAL DIRECTOR**

This season marks Tony's eighteenth year as Technical Director for Renaissance Theaterworks. In all, he has worked in various capacities on over forty-five Renaissance productions over the last twenty-nine years. Anthony is also technical director for Wild Space Dance Company. Tony has worked for Alverno Presents (R.I.P.), Skylight Music Theatre, Milwaukee Chamber Theatre, and Bialystock & Bloom (R.I.P.). In a parallel universe, Tony is a partner in a small custom carpentry firm. Recent highlights: Scenery construction for Milwaukee performances of *Outpost & Other Stories* from The Centre by William Kentridge's Centre For The Less Good Idea. Technical Director for MHK Productions Boswell (By playwright and Renaissance co-founder Marie Kohler) Off-Broadway at 59E59th Theater.



### **Jason Orlenko~ (he/him) – COSTUME DESIGN**

Jason is delighted to return to Renaissance where he has designed costumes for *COST OF*

*LIVING*, *PHOTOGRAPH 51*, *RUSSIAN TRANSPORT*, *VIOLET HOUR*, *LETTICE & LOVAGE*, and *THE UNDERSTUDY*. Work in Milwaukee includes *MAMMA MIA*, *NEWSIES*, *KISS ME KATE* (Skylight Music Theatre); *THE MOUSETRAP*, *THE REVOLUTIONISTS*, *SILENT SKY* (Next Act). Additional design work includes Milwaukee Rep, Utah Festival Opera &

## BIOGRAPHIES (cont.)

Musical Theatre, First Stage, Rep of St. Louis, Milwaukee Chamber Theatre, Milwaukee Opera Theatre, Forward Theatre, In Tandem Theatre, Cardinal Stage. Other credits include the Hangar Theatre, Illinois Shakespeare Festival, the Florentine Opera, 4 summers at American Players Theatre. Jason currently resides in Milwaukee with his husband Brick, where he is Assistant Professor of Costume Design at UW-Milwaukee. [www.jasonorlenko.com](http://www.jasonorlenko.com)



### **Brandon Reed – SOUND DESIGN**

Brandon Reed is a designer, composer, and audio engineer based in Chicago.

Broadway credit includes GOODNIGHT, OSCAR (Assistant Sound Designer). Regional credits include companies such as American Players Theatre, Goodman Theatre, Lookingglass, Cape Fear Regional Theatre, Constellation Stage & Screen, First Folio, Marriott, Adirondack Theatre Festival, Lake Dillon Theatre Company, and many more. He also received the 2019 USITT Robert Cohen Sound Achievement Award. He's a member of United Scenic Artists, Local 829 and Theatrical Sound Designers and Composers Association. MFA: University of Illinois at Urbana-Champaign, BS: Ball State University. [www.brandonreedsounddesign.com](http://www.brandonreedsounddesign.com)



### **Jayne Regan Pink – MOVEMENT DESIGN**

Born in London, Jayne studied at the Royal Ballet School. Hailed as one of the finest dramatic dancers of her generation. Jayne has

traveled internationally as a ballet coach and worked as a dialect coach, choreographer, and movement director & consultant. Her local credits include HAPPY DAYS, NEAT, WITCH.(Renaissance Theaterworks); MATILDA, CHITTY CHITTY BANG BANG, ELEPHANT AND PIGGIE, and URINETOWN (First Stage); and HAPPY NOW, THE NORMAN CONQUESTS, and A CHRISTMAS CAROL (Milwaukee Rep). When her son, Max Pink, was cast in RUSSIAN TRANSPORT (Renaissance Theaterworks 2018), she became more involved with the theater and served on the board of directors.



### **Nora Sammons (she/her) – ASSOCIATE COSTUME DESIGN**

Nora is thrilled to be working for Renaissance Theaterworks. She is a senior at the University of Wisconsin-Milwaukee who is pursuing a Bachelor of Fine Arts in Theatre Production at Peck School of the Arts. Nora has been a designer and stitcher for various theater and dance productions at Peck, including THE MOORS, THE RIVALS, ALL NIGHT STRUT, PIGGSVILLE, and SPRINGDANCES: ELEMENTAL IN MAY.



### **Sydney Smith (she/her) – ASST. STAGE MANAGER**

Sydney Smith is thrilled to be assistant stage managing THE WOLVES! Recently, Sydney was the production coordinator on COUNTRY SUNSHINE (Milwaukee Rep). Other selected local credits include Assistant Stage Manager for HOOPS, WHERE DID WE SIT ON THE BUS, THE ISLAND, INDECENT

## BIOGRAPHIES (cont.)

(Milwaukee Chamber Theatre); COST OF LIVING (Renaissance Theaterworks); Production Assistant for THE NATIVITY VARIATIONS (Milwaukee Rep). Sydney will also be the production coordinator for PIANO MEN II (Milwaukee Rep). Sydney is grateful and appreciative of her family and friends for supporting her work and Tuna for providing cat snuggles.



### **Bailey Wegner (She/Her) – PRODUCTION & STAGE MANAGER**

Since 2017 Bailey has filled many off-stage roles at RTW including PM, SM,

ASM, CCO, (accidental) IT, and some with acronyms that are TBD. Of more than a dozen productions at RTW, highlights include WITCH, COST OF LIVING, THE ROOMMATE, PHOTOGRAPH 51, TOP GIRLS, and the Samuel French Off-Off Broadway Festival. A favorite part of the season is the BRINK New Play Festival, which she has been stage managing for 6 years. Credits for Milwaukee Chamber Theater; INDECENT (SM) and THE FEW (ASM). She holds a BFA in Theater from UW Milwaukee. Outside of the theater, she can be found kayaking and watching films at the Oriental theater.

## STAFF BIOGRAPHIES



### **Suzan Fete (she/her) – ARTISTIC DIRECTOR**

Suzan is a graduate of University of Illinois. Suzan co-founded RTW in 1993. Favorite RTW projects include: directing WITCH, TOPDOG/UNDERDOG, THE SHAPE OF THINGS, BLACKBIRD, TOP GIRLS, and THE ROAD TO MECCA, touring NEAT to Port Elizabeth, South Africa in 2013 and finishing as finalists with ALL OF THE EVERYTHING and LUCKY NUMBERS in the Samuel French Off Off Broadway Short Play Festival, in 2015 and 2019 respectively. Suzan is especially proud that RTW won the prestigious 50/50 in 2020 International Applause Award for the 2015-16 season in recognition of RTW's commitment to women playwrights. Suzan lives happily in Wauwatosa with her husband, Jeff.



### **Lisa Rasmussen (she/her) – MANAGING DIRECTOR**

This season is Lisa's sixteenth at RTW which means she has been serving the unique mission of "theater by women, for everyone" for more than half of its life! Lisa started as RTW's Development Director in 2008. In December 2017, Lisa was promoted to Managing Director. Since then, she has overseen 15 full productions, five BRINK New Play Festivals and the move to this beautiful performance space (the most accessible theatre in town). Lisa received her BA in Theater and Psychology from Cardinal Stritch University in 2003. Lisa loves living in Bay View with her husband Jake, daughter Anna and puppy Bjorn.



## ABOUT RENAISSANCE THEATERWORKS

Renaissance Theaterworks, “Theater by Women for Everyone”, is Milwaukee’s first, women-founded, women-run professional theater company. Dedicated to promoting the work of women onstage and off, Renaissance Theaterworks creates theater that connects with all people – and what it means to be human – through vibrant, visceral storytelling.

Founded in 1993 by Suzan Fete, Marie Kohler, Raeleen McMillion, Jennifer Rupp and Michele Traband, Renaissance Theaterworks is the nation’s second oldest theater company with a mission to promote gender parity in theater. Renaissance Theaterworks produces outstanding, artistically unsurpassed theater that makes audiences feel more, think harder, laugh louder.

Renaissance Theaterworks is now a resident theater company at 255 S. Water Street. This bold move will allow us to continue on a positive trajectory for many years to come. Administrative offices remain on the 5th floor of the Broadway Theatre Center.

Renaissance Theaterworks is a member of the National New Play Network, Playwrights Welcome, Theatre Communications Group Hispanic Professionals of Greater Milwaukee, Visit Milwaukee, World Premiere Wisconsin and the Historic Third Ward Association. In 2018, Renaissance Theaterworks hosted Statera Con III and supports Statera Arts.

**Office:** 158 N. Broadway 414-273-0800 | **Performances:** 255 South Water St.

**Tickets:** R-T-W.com or **Box Office:** 414-278-0765

Mon.-Fri. 12-5pm and 2 hours before every performance.

Join our email list at **R-T-W.com** and follow us on social media!

## ABOUT FIRST STAGE YOUNG COMPANY



First Stage Young Company, the Theater Academy’s award-winning training program for advanced high school actors is open to students who want to take their work to the next level. Accepted students will complete college and graduate-level training in Acting, Voice, Movement, and Shakespeare as well as electives ranging from

Auditioning to Stage Combat to Dialects.

Traditionally, the Young Company hosts master classes with guest artists from across the nation, produces a season of three plays, and facilitates special excursions to the Utah Shakespeare Festival and American Players Theater.



Scan to learn more about First Stage Young Company or visit [www.firststage.org/theater-academy/young-company](http://www.firststage.org/theater-academy/young-company).

## RENAISSANCE THEATERWORKS STAFF

Artistic Director . . . . . Suzan Fete  
 Managing Director . . . . . Lisa Rasmussen  
 Marketing Director . . . . . Sarah Kriger Hwang  
 Development Director . . . . . Dana Dossett  
 Artistic Associate . . . . . Jayne Regan Pink  
 Marketing Manager . . . . . Maria Pretzl  
 Production Manager . . . . . Bailey Wegner  
 Community Engagement Manager . . . . . Ryan Rehak

## RENAISSANCE THEATERWORKS BOARD OF DIRECTORS 2023-2024

### EXECUTIVE COMMITTEE

President: Ginny Finn

Treasurer: Laura Arnow

Secretary: Sofia N. Ascorbe

### DIRECTORS

Mary Beth Alvarez	Patti Keating Kahn	Vivian Moller
George Dionisopoulos	Joanne Lipo Zovic	Jodi Ristau
Susan Frautschi	N. Lynnette McNeely	Beth Weirick



## Established to recognize those who have made an estate or planned gift to Renaissance Theaterworks, Inc.

Your forethought will ensure long-term viability for RTW’s unique mission, as well as the continuation of our uninterrupted debt-free history.

Legacy gifts can be made through bequests, life insurance, IRAs or other planned giving arrangements.

Have you already included Renaissance Theaterworks in your planning?

Please let us know!

### Join Now!

Interested in learning more?  
 Contact Dana Dossett, Development Manager at [DDossett@r-t-w.com](mailto:DDossett@r-t-w.com)

## GREEN ROOM GROUP

Our Green Room Group is an exclusive circle of our major individual donors. They receive special benefits and behind-the-scenes access to the fun and excitement of Renaissance Theaterworks.

As a Green Room Group member you play a huge role in our mission. Your gift supports gender balance. You enable us to hire the finest actors and directors who bring us extraordinary, sold-out performances. If you appreciate the work we do and want to become a part of it, now is the time to contribute! Contact us today to learn more.

Anonymous (3)	Katie Heil	Vivian Moller
George Affeldt	Kathleen & John Hickey	Lori Morse & Robert Gardenier
Dr. Mary Beth Alvarez	Susan Holmes	Chris Mortensen
Catherine Anderson	Sarah & Milt Hwang	Frank Mozer
Patricia & David Anderson	Sarah & Vlad Jelencic	Kate & Ken Muth
Laura & Mike Arnov	Patricia Keating Kahn & Chuck Kahn	Joyce and H. Pabst
Tanya Atkinson	Dr. David Paris & Derin Bjugstad	Dr. David Paris & Derin Bjugstad
Donna & Donald Baumgartner	Kirsten & Andy Kerr	Lois & Richard Pauls
Sarah Beckett	Brandy Kline & Michael Anderson	Mary & Ross Read
Liz & Scott Bickley	Marie Kohler & Brian Mani	J. Michael Reavis
Amy & Dylan Bolin	Leslie Kohler	Susan Riedel
Amy & Nate Cade	Mary Korkor	Jodi Ristau
Miriam Colton & Holly Rehberg	Pam Kriger	Jennifer Rupp & Richard Chudnow
Margaret Dethloff & Terri Zeh	Diane & James Kuntzelman	Molly & Jeff Schissler
Judges Jean & John DiMotto	Sandra Laedtke	Jan Serr & John Shannon
George & Sandy Dionisopoulos	Laura Lindner	Lois Smith
Mike Drescher	Joanne Lipo Zovic & Paul Zovic	Patricia & Jerry Styberg
Donna Drosner	Marianne & Sheldon Lubar	Elizabeth Weirick
Suzan & Jeff Fete	Sherry & Rick Lundell	Sandra Zingler
Virginia Finn & Evan Lenhardt	Barbara Manger & Bill Lynch	Judith Marie Zwirlein
Susan & Timothy Frautschi	Mary Jo & Guy McDonald	
Pamela Frautschi	N. Lynnette McNeely	
Kathy & Stewart Friend		

## DONORS

Renaissance Theaterworks gratefully acknowledges the following individuals and organizations for their generous support. Donations listed were received between July 1, 2022 and December 31, 2023. Make a gift today by visiting [r-t-w.com](http://r-t-w.com).

### \$100,000+

United Performing Arts Fund

### \$10,000+

Laura & Mike Arnov  
Bader Philanthropies Inc.  
Donna & Donald Baumgartner  
Brico Fund  
George & Sandy Dionisopoulos  
Suzan & Jeff Fete  
Susan & Timothy Frautschi  
Greater Milwaukee Foundation  
Herzfeld Foundation  
Greater Milwaukee Foundation's Judith A. Keyes Family Fund  
National Endowment for the Arts  
J. Michael Reavis  
Ruth Arts  
Shubert Foundation  
Stafford Rosenbaum, LLP  
Bert L. & Patricia S. Steigleder  
Charitable Trust  
Sandra Zingler

### \$5,000+

Anonymous (2)  
Chicago Community Trust  
Judges Jean & John DiMotto  
Ralph Evinrude Foundation, Inc.  
FEMA  
Marie Kohler & Brian Mani  
Marianne & Sheldon Lubar  
Sherry & Rick Lundell  
Milwaukee County CAMPAC  
Milwaukee Arts Board  
Nonprofit Management Fund  
Jane Bradley Pettit Foundation  
Jodi Ristau  
Jan Serr & John Shannon  
Wisconsin Arts Board

### \$1,000+

George Affeldt  
Dr. Mary Beth Alvarez  
Catherine Anderson

Patricia & David Anderson  
Sarah Beckett  
Liz & Scott Bickley  
Amy & Dylan Bolin  
Amy & Nate Cade  
Miriam Colton & Holly Rehberg  
Margaret Dethloff & Terri Zeh  
Mike Drescher  
Donna Drosner  
Drosner Phillips Ristau Group at Baird  
Fiduciary Management, Inc.  
Virginia Finn & Evan Lenhardt  
Pamela Frautschi  
Kathy & Stewart Friend  
Gardner Foundation  
Greater Milwaukee Foundation  
Briggs & Stratton Fund  
Colton Charitable Fund  
Greater Milwaukee Assn. of Realtors Youth Fnd. Inc  
Heil Family Foundation  
Kathleen & John Hickey  
Susan Holmes  
Sarah & Milt Hwang  
Sarah & Vlad Jelencic  
Patricia Keating Kahn & Chuck Kahn  
Kirsten & Andy Kerr  
Brandy Kline & Michael Anderson  
Leslie Kohler  
Mary Korkor  
Pam Kriger  
Diane & James Kuntzelman  
Sandra Laedtke  
Laura Lindner  
Joanne Lipo Zovic & Paul Zovic  
Jane Barclay Mandel & Paul Mandel  
Barbara Manger & Bill Lynch  
Mary Jo & Guy McDonald  
N. Lynnette McNeely  
Vivian Moller  
Lori Morse & Robert Gardenier

Chris Mortensen  
Kate & Ken Muth  
Charles D. Ortgiesen Foundation  
Joyce and H. Pabst  
Dr. David Paris & Derin Bjugstad  
Lois & Richard Pauls  
Peck Foundation, Milwaukee  
Clare M. Peters Charitable Trust  
Mary & Ross Read  
Susan Riedel  
Jennifer Rupp & Richard Chudnow  
Molly & Jeff Schissler  
Lois Smith  
Patricia & Jerry Styberg  
Elizabeth Weirick  
Windhover Foundation  
Wisconsin Humanities Council  
Woman's Club of Wisconsin Foundation  
Judith Marie Zwirlein

### \$500+

Erin Anderson  
Janine Arseneau  
Daniel D. Blinka  
Jill Broekhuizen  
Diane & David Buck  
Brenda Andrews & James Cauley  
Ellen & Joe Checota  
Catherine & Mario Costantini  
Patricia D'Angelo  
Sandy Duffy  
Sally & Al Ferguson  
Kirsten & Bill Finn  
Sarah Ford & Randall Klumb  
Danni and Shel Gendelman Memorial Endowment  
Laura Gordon  
Barbara Haig & Daniel Schley  
Anne Hamilton Geiffuss & Frederick Geiffuss

## WHAT IS THE Green Room Group?

In theater, the green room is a special space for an actor to focus, connect with fellow artists, prepare for the next scene, and even celebrate after a show.

At Renaissance Theaterworks, the "Green Room Group" is composed of Milwaukee's most vibrant cultural supporters, and our largest, most steadfast donors. They set the scene

for us to connect directly with the community, produce high quality, diverse stories, and celebrate as we go!

**Green Room Group** members gain *behind-the-scenes* insights on how we harness our **artistic** and **financial resources** to create moving theater.

Members are also invited to special events like the **First Rehearsal** of each production to hear the cast read the script aloud for the first time and the **Opening Night reception** to raise a glass with us and mingle with the creative team.

MEET US IN THE  
**Green Room!**

**CONTACT**  
**DANA DOSSETT**  
Development Manager  
DDossett@r-t-w.com

**DONORS (cont.)**

Margarete & David Harvey  
 Zoe Higgins  
 Mary & Mark Hollister  
 Angela Jacobi  
 Bruce Johnson  
 Annie Jurczyk  
 Donna Kleczka  
 Barbara & Dennis Klein  
 Lola & Bob Loepfe  
 Joan Lubar & John Crouch  
 Lee Marquardt  
 Sarah McEneaney & Robert  
 Smith  
 Jane O'Connell  
 Kari Pietsch-Wangard  
 Candy & Bruce Pindyck  
 Jayne Regan Pink & Michael  
 Pink  
 Nancy Pinter  
 Devon & John Pittman  
 Carol & Kevin Schuele  
 Rebecca Schultz  
 Pamela Seccombe  
 Janine & Bruce Smith  
 Anne & Gary Summers  
 Carolyn Sweers  
 Joy Towell  
 Patricia Van Alyea  
 Linda Benfield & Steve  
 Wallace  
 Mary Wegener  
 Gwendolyn & William Werner  
 Marilyn White  
 Joan Wiegand  
 Patricia Williams  
 Kim Wynn

**\$250+**

Actors' Equity Foundation  
 Elizabeth A. Amato  
 Anonymous  
 Sofia Ascorbe  
 David Berg  
 Marcia Brooks & Edward  
 Hammond  
 Mary Jo Burgoyne  
 Linda & Thomas Burke  
 Laurie & Peter Byrne  
 Chris Calvelli  
 Sharon & Mark Cameli

Deborah & David Cecsarini  
 Jane & Stephen Chernof  
 Mary & James Connelly  
 Christy D'Angelo  
 Gabrielle Davidson & Rob Lyon  
 Mary Jo & Tom Dempsey  
 Anne DiMotto  
 Carol Z. Dolphin  
 Diane & Robert Donohoo  
 Dana & Corey Dossett  
 Chip Duncan  
 Linda Edelstein  
 Tina Eickermann  
 Judy & James Findling  
 Bette & Richard Frangesch  
 Amy & Andrew Funk  
 Idy Goodman  
 Sheila & Harry Gustafson  
 Katie Heil  
 Margaret Henningsen  
 Bett Jacquart  
 Jacob Janssen  
 Alyce & Paul Katayama  
 Katherine & Vincent Katter  
 Elizabeth Levins  
 Sue & Greg Lochen  
 Mary McCormick & Timothy  
 Hawks  
 Sara & Howard Miller  
 Theresa & Bob Muselman  
 Holly & Gregory Orlowski  
 Jill Anna Ponasik & William H.  
 Bradley  
 Mary Pretat  
 Amy Rabideau Silvers & Joe  
 Silvers  
 Christine Radiske & Herbert  
 Quigley  
 Lynn Rix  
 Emily Robertson  
 LindaGale Sampson  
 Susan & Michael Schall  
 Judith & Bob Scott  
 Eileen & George Stone  
 Kimberly Stoner & Cory Krivitz  
 Linda & Thomas Streifender  
 Michael Sullivan  
 Nici Teweles  
 Sheryl Van Haren  
 Susan Vetrovsky & Michael

Goldstone  
 Donna & Jerry Walsh  
 Jenny Wanasek & Mark  
 Weinberg  
 Adrienne & Larry Waters  
 Lani Williams & Earl Potter

**\$100+**  
 Libby Amato  
 Christine Anderson  
 Joy & Steve Appel  
 Tanya Atkinson  
 Erica Arrington  
 Mary & Larry Bandor  
 Aliza Baran  
 Brian Bauman  
 Cindy Benning  
 Marta & Marc Bianchini  
 Kathie Eilers & Barry Blackwell  
 Holly Blomquist  
 Julie & William Bonnell  
 June & Jim Buskel  
 Jason Buskel  
 Timothy Butts  
 Doris Carroll  
 Mary Belle & Thomas Chatton  
 Cecile Cheng  
 Mary Jo & John Coffee  
 Eleanor & Michael Cotey  
 Kathleen Allen Crocker  
 Barbara Dittl  
 Jennifer Dobby  
 Sharon Dossett  
 Barbara Duffy & Donn Preston  
 Dr. Eric Durant  
 Anne Brower & Jane Earle  
 Cecile & Dennis Engel  
 Cody Estle  
 Michael Evans  
 Kevin Flaherty  
 David Flores  
 Brooke & Craig Frizzell  
 Amy Funk  
 Patricia Gahl & Gregory Polak  
 Paula & Ralph Garcia  
 Peter Goldberg  
 Karen Gotwalt & Ronald Reitz  
 Stephanie Govin-Matzat  
 Alison Graf  
 Sandy & Mark Grady

**DONORS (cont.)**

Nancy & Reed Groethe  
 Katherine Grogan  
 Charles Grosz  
 Matthew Groth  
 Lyn & Michael Hamilton  
 Diana & Ronald Hanks  
 Amelia Hanks  
 Lisa & Michael Hatch  
 Alice Hatzenbeller  
 Louise Hermsen  
 Michelle Herro  
 Mary Hessel  
 Cecilia Hillard  
 Robert Hirschi  
 Deborah & David Hoffman  
 Victoria Hudziak  
 Darryl Huennekens  
 Cathy Jakicik  
 Kristine Jensen  
 Paula John  
 Carol Justin & Ed Szopinski  
 Diane & Richard Kane  
 Marcella Kearns  
 Edward Kelly  
 Demaris Kenwood  
 Kirsten & Andrew Kerr  
 Kathi Koenig  
 Maureen and Daniel Konkol  
 Konrad Kuchenbach  
 Frances Kulutbanis  
 Linda Laarman  
 James & Charmaine LaBelle  
 Dannette & Avrum Lank  
 Judy & Norm Lasca  
 Emily Leick  
 Sally Lemke  
 Justine Leonard  
 Sheri & Lloyd Levin  
 Paula Lewein  
 Natalie & Gary Longworth  
 Lynn Lucius & Richard Taylor  
 A.J. Magoon  
 Sherry & Norman Malmon  
 Judy Martel  
 Dr. Lisa Wehr-Maves & Dr.  
 Matthew Maves  
 Maureen McAvoy  
 LaVerne McCoy  
 Elaine McDermott

Barbara McMath & Robert  
 Ferriday, III  
 Raeleen McMillion  
 Cara McMullin  
 N. Lynnette McNeely  
 Wendy Moeller  
 Pat & Gary Moldenhauer  
 Patricia & Mark Monroe  
 Cindy Moran & Todd Broadie  
 Andrew Muriuki  
 John Murtaugh  
 Ann Navin  
 Donna Neal  
 Jane Nicholson  
 Marjorie Nixon  
 Christine & James O'Brien  
 Kathy & Alan Olsen  
 Joseph Pabst  
 Gerry Pas  
 Paula Penebaker  
 Pam Percy  
 John Peters  
 Janet & Randy Peterson  
 Kathryn Podmokly  
 Teresa & Michael Prattke  
 Patrick Rath  
 Anna & Dan Robbins  
 Karyn & David Roelke  
 Jinnene Ross  
 Annemarie Sawkins  
 Robert Schellhammer &  
 Maureen Holt  
 Carole & Joe Schlangen  
 Laura Schnicke & Robert Mohr  
 Ruth Schudson  
 Brooke Schultz  
 Micki Seinfeld  
 Carney Silberg  
 Patrick Small  
 Minna & Mark Smith  
 Judith & Jerrel Stanley  
 Nancy Dahms Steller & Lyle  
 Steller  
 Lena Stephenson  
 Richard Stone  
 Sandra Strawn  
 Karen & Sandy Swartzberg  
 Virginia & John Taucher  
 Tawnie Thompson  
 Sara Toenes

Sophia Angela Topetzes-  
 Strelka  
 Josie Trettin  
 Julia Vosper  
 Yvonne Wagner  
 Margaret & John Ward  
 Catherine Washabaugh  
 Phyllis Wax  
 Carole & Bill Wenerowicz  
 Sandra Wiegand  
 Margaret Wilber  
 Maxine Wishner  
 Mary & Roger Wolverton  
 Carolyn Wood  
 Michael Wright & Ray Jivoff  
 David Zalewski  
 Herbert Zien

**\$50+**  
 June & Paul Ambro  
 Diane Barton  
 Thomas J. Basting Sr.  
 Amy Biersteker  
 Ann Bowe  
 Jeanette Braun  
 Debra Brehmer  
 Rick Burbey  
 Robin Burns  
 Gladys Chmielek  
 Elizabeth Cichowski  
 Flora Coker  
 Patricia & Phillip Crump  
 Mary & Richard Cywinski  
 Cynthia Dicamelli  
 Linda & Pat Devitt  
 Elizabeth & Peter Dietz  
 Miriam & Rick Falk  
 Mary Alice Fifer  
 Patty Francis  
 Will Graft  
 Danielle Ippolito  
 Karen Johnson & James Toth  
 Maureen Kania  
 Judith & William Kay  
 Sarajane & Robert Kennedy  
 Donald Kielich  
 Richard Knoedler  
 Linda J Nielsen Korducki  
 Karen & Dennis Leyer  
 Nicole Magnusson

## DONORS (cont.)

Tara Mallen  
Patricia Martin  
Marci Mitchell  
Frank Mozer  
Bruce Murphy  
Pat O'Connell  
Francisca A. Olmedo-Estrada  
Marianne Plaisier & Gordan  
Mortensen  
Lynn Preston  
Darlene Roberts  
Carla Roden  
Linda Roethlisberger & Dennis  
Hennessey

Brigitte Salver & Fay Sanders  
Alex Scheurell  
Ellen Friebert Schupper  
Patrick Schley  
Pam Shy  
Shayne Steliga  
Linda Stephens  
Susan Stewart  
Christine Straw  
Judge Jeff & Dyan Wagner  
Josef Wantschik  
Dean Wegner  
Marie Weiss  
Dawn Wenzell

Nick Werner  
Christine Yundem  
**IN KIND**  
Cooper's Hawk  
Florentine Opera Company  
Sarah & Milt Hwang  
Milwaukee Ballet  
Next Act Theatre  
Outskirts Theatre Company  
Jayne & Michael Pink  
Traveling Lemur Productions,  
LLC  
Skylight Music Theatre  
Julia & David Uihlein

## ABOUT UPAF

Each year, more than 30,000 individuals, corporations and foundations in greater Milwaukee annually support the UPAF annual campaign, making it one of the nation's largest united arts funds. In addition to raising and allocating operating funds, UPAF is enhancing its value to the community, donors and performing arts by serving as a community wide resource for developing the excellence, reputation and impact of our performing arts.

**THE LIGHTNING THIEF**  
THE PERCY JACKSON MUSICAL

BOOK BY  
**JOE TRACZ**

MUSIC & LYRICS BY  
**ROB ROKICKI**

ADAPTED FROM THE BOOK  
THE LIGHTNING THIEF BY  
**RICK RIORDAN**

THE LIGHTNING THIEF  
is presented by arrangement  
with Concord Theatricals.  
[www.concordtheatricals.com](http://www.concordtheatricals.com)

TICKETS  
START AT  
\$20!

**FEB 3 - MAR 10, 2024**  
MARCUS CENTER'S  
TODD WEHR THEATER

**FIRST STAGE**  
TRANSFORMING LIVES THROUGH THEATER



# SCARECROW

by Heidi Armbruster

Feb 21 - Mar 17, 2024

Written and Performed by Heidi Armbruster  
Directed by Laura Gordon

A big-city actress lands back at her family's Wisconsin dairy farm to grieve herself back to life. Broadway's Heidi Armbruster pens and performs a rip-roaringly hilarious and unbelievably touching one-woman journey of roller coasters, kittens and cows.

**Tickets:** (414) 278-0765 | [nextact.org](http://nextact.org) | 255 S Water St, Milwaukee



Tickets: [r-t-w.com](http://r-t-w.com) or 414-278-0765

# L'APPARTEMENT

A SIDE-SPLITTING COMEDY  
BY JOANNA MURRAY-SMITH

North American Premiere!  
Directed by Mallory Metoxen

March 24 -  
April 14

-Previews March 22 & 23-

**RTW** *renaissance*  
THEATERWORKS

