

PLAYBILL

L'APPARTEMENT

A SIDE-SPLITTING COMEDY
BY JOANNA MURRAY-SMITH
Directed by Mallory Metoxen

March 24 - April 14

-Previews March 22 & 23-

**North American
Premiere!**



renaissance
THEATERWORKS





UNITED PERFORMING ARTS FUND

If you're for

FUN

the arts are for you.

AND WE'RE FOR THE ARTS!
UPAF supports the entertainment and excitement of over 50+ diverse performing arts groups across Southeastern Wisconsin.



JOIN US AND
DONATE TODAY AT
UPAF.ORG/DONATE



presents

L'APPARTEMENT

BY JOANNA MURRAY-SMITH

MARCH 24 – APRIL 16, 2024

Preview Performances March 22 & 23

Directed by
MALLORY METOXEN

Production Manager
& Stage Manager
BAILEY WEGNER*

Asst. Stage Manager
BECK TRUMBULL

Technical Director
TONY LYONS

Lighting &
Scenic Design
JASON FASSL~

Sound Design
SARAH RAMOS

Props Design
BIANCA GONZALEZ

Sculpture Design
& Creation
PAUL GEGENHUBER

Costume Design
KIM INSTENES

Wardrobe Supervisor
SHELBY KAISHIAN

Dialect Coach
RAELEEN MCMILLION

Dialect Assistant
MASON SHEFCHIK

Fight &
Intimacy Director
CHRISTOPHER ELST

Deck Supervisor
NAT GOELLER

Master Electrician
KATIE ANDERSON

Board Operator
FAITH LENSMTIH

Scenery Construction
TONY LYONS
TIMOTHY LINN

Scenic Painting
AMANDA MARSALA

Show Mascot
RÉMY T. WOOD

House Managers
**CAROLINE NORTON, AUDWIN SHORT, BARBARA SLAGTER,
KAYLENE HOWARD, MATTHEW TORKILSEN**

*Member of Actors' Equity Association ~ Member of the United Scenic Artists of America

This play will run approximately 100 minutes with no intermission.

L'APPARTEMENT is presented by arrangement with Tropolis PTY Limited c/o 42M&P Ltd, on behalf of Joanna Murray-Smith.

SEASON SPONSORS

Laura & Mike Arnow,
Jan Serr & John Shanon, Sandy Zingler, Herzfeld Foundation,
Shubert Foundation, Bert L & Patricia S. Steigleder Charitable Trust



SHOW SPONSORS



Judges Jean & John DiMotto

TIME/PLACE

Paris, France. Present Day.

CAST

MEG Emily Vitrano*
ROOSTER Nick Narcisi
SERGE Jonathan Bangs*
LEA Cara Johnston

UNDERSTUDIES

Understudies never substitute for a listed player unless an announcement is made at the beginning of the play.

u/s LEA/MEG Maya Danks
u/s ROOSTER Jared Hoover
Second Swing Alexia Slagle

**Member of Actors' Equity Association*

SPECIAL THANKS

Bat Stitch Crochet, Black Twig/C Adams Bakery, Mary Jo Caminiti, Katie Hamm, Margaret Hasek-Guy, Jim Guy, Timothy Linn, Joel Penegor, Nathaniel Schardin

RTW IS THRILLED TO ANNOUNCE OUR 2024-25 SEASON!

Escape the Ordinary.

We'll take you where nothing is as it seems.

Get your subscription to our 2024-25 season today! Put the dates on your calendar now, and you'll never have to worry about missing out on Milwaukee's hottest tickets. With three different subscription packages, there's an option suited for all! Talk to an RTW representative in the lobby or go to our website for more information! Thank you for supporting "Theater By Women, for Everyone"!

THE MOORS

A dark comedy, by Jen Silverman | Directed by Suzan Fete

October 20 – November 10, 2024 (Previews October 18 & 19)

A spooky comedy by the playwright of WITCH. THE MOORS is a wild gothic tale, worthy of Bronte and perfect for the Halloween season.

THE NETHER

A sci-fi thriller, by Jennifer Haley | Directed by Elyse Edelman

January 12 – February 2, 2025 (Previews January 10 & 11)

Enter the Nether: where anything is possible and there are no consequences. A Sci-fi detective story that dives deep into the complex moral implications of AI technology.

BUYER & CELLAR

A star-studded comedy, by Jonathan Tolins

Directed by Ray Jivoff | Featuring Doug Clemons

March 23 – April 13, 2025 (Previews March 21 & 22)

BUYER & CELLAR is an irresistible comedy about the price of fame, the cost of living, and the oddest of odd jobs.

Learn French!

See where it can take you!

Save 15% on any class with code **APPARTEMENT24**



af
Alliance Française
de Milwaukee



bonjour@afmilwaukee.org
414-964-3855
1800 E. Capitol Drive
Milwaukee, WI




L'APPARTEMENT
BY JOANNA MURRAY-SMITH

Scan the QR code to access digital versions of

- Audience Guide
- Sensory Guide
- Accessibility Guide
- Digital Playbill

FOR YOUR INFORMATION

HEALTH SAFETY: With the prevalence of COVID-19, flu and other viruses, we support and encourage your personal decision to wear a mask. If you feel unwell, please opt to stay home. RTW will handle health-related cancellations on a case-by-case basis.

FOOD & BEVERAGE: Drinks may be taken into the theatre, but food is not permitted.

ENTERING & EXITING THE THEATER SPACE: Please use walkways to access the seating areas and refrain from crossing over the stage.

CANCELLATION POLICY: Renaissance Theaterworks does not cancel performances due to inclement weather, nor do we offer refunds due to weather.

LATECOMER POLICY: Latecomers will not be seated until an appropriate time in the performance. Seating may not be permitted 30 minutes after the start of a performance. If you are running late, please call the Ticket Office at 414-278-0765.

HEARING LOOP LISTENING SYSTEM: The theater is equipped with an advanced technology Hearing Loop listening system. The system will broadcast directly to those with T-coil hearing aids. Portable assistive listening devices for conventional listening are available and may be checked out at the Concessions Counter.

ELECTRONIC DEVICES: NO cameras or recording devices of any kind (including smartphones) are allowed to be used in the theater. Please turn off all electronic equipment.

STUDENT, GROUP, & SENIOR DISCOUNTS: Please contact the Ticket Office at 414-278-0765.

AUDIO LOOP INSTRUCTIONS

T-Coil Listeners: Simply set your hearing device to the Loop setting and enjoy the show.

Conventional Listeners: Check out a receiver and headphone set at the Concessions Counter. The House Manager can instruct you on its use, but here are some simple instructions.

Like a transistor radio, the small box has an off-on and volume knob; turn on and adjust for your comfort level. You will need to be in the seats to receive the Loop signal.

The box works directionally; that is, it matters which way it is pointing.

- In most of our seating, the box works best when held up straight, with the volume knob on top, and the flat back pointing toward the stage.
- In the front rows, you will get the strongest signal with the box laying flat on your leg, with the flat back pointing straight to the floor.

Please ask the House Manager for assistance, if needed. We hope you enjoy the show.

BIOGRAPHIES



Mallory Metoxen – DIRECTOR

Mallory is an Artistic Director at Seven Devils New Play Foundry and was formerly

Renaissance Theaterworks' Artistic Associate and Director of New Play Development. Select directing credits: BEST OF Br!NK BRIEFS, SEX WITH STRANGERS, THE DROWNING GIRLS, THE UNDERSTUDY (Renaissance Theaterworks); ALL OF THE EVERYTHING, LUCKY NUMBERS (Samuel French OOB); ANNE OF GREEN GABLES (Constellation Stage & Screen); THE EFFECT OF GAMMA RAYS... (Splinter Group); FEFU AND HER FRIENDS, THE THANKSGIVING PLAY, RING ROUND THE MOON, NEIGHBORHOOD 3: REQUISITION OF DOOM, THE HOW AND THE WHY (The Theatre School); THESE SHINING LIVES (Umbrella Group); and new works at the arc theatre, Forward Theater, Milwaukee Chamber Theater, Milwaukee Metropolitan Voices, Renaissance Theaterworks, Seven Devils New Play Foundry, and Third Avenue PlayWorks. MFA in Directing from The Theatre School at DePaul University. MalloryMetoxen.com

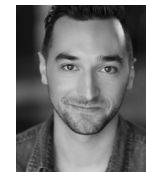


Emily Vitrano* – MEG

Emily is thrilled to be back at RTW for L'Appartement! She holds a BFA in Acting from The University of North

Carolina at Greensboro and an MFA in Acting from Northern Illinois University (NIU). She is a certified yoga instructor at the 200-hour level, and recently became certified in Mental Health First Aid. Emily has worked regionally on many stages,

including: Milwaukee Repertory Theater, Milwaukee Chamber Theatre, Next Act Theatre, Renaissance Theaterworks, and Allentown Shakespeare in the Park. Emily has also appeared on television in a national commercial for Batteries/Bulbs Plus, and regional commercials for Mills Fleet Farm, Sanford Brown University, and Walgreens. Emily is a proud member of Actors' Equity Association and is represented by Talent X in Chicago. When not onstage, Emily is an Instructor of acting, voice, and movement at NIU, where she also co-directed SoTD productions THE LANGUAGE ARCHIVE and IN A WORD. Emily makes her creative home in Saint Charles, IL with her husband Miles, their son, Henry, and their puppy, Ani. She would like to thank her family for their support of her artistry and for their countless hours of free childcare, making it possible for her to continue pursuing her dream; her students for teaching her more than she could ever teach them; and her colleagues for moving mountains to help make this possible. And a very special thank you to Miles, for believing in her sometimes more than she believes in herself. For Ella, always. And now also for Henry.



Nick Narcisi – ROOSTER

Nick Narcisi is thrilled to be back at Renaissance Theaterworks and ecstatic to be working on a play again. During the

pandemic, Nick stepped away from theater and joined the world of cancer research (he is as surprised with that career pivot as you are). He last worked with Renaissance as Watson in PHOTOGRAPH 51. Some of his favorite credits include: Ethan in SEX WITH

BIOGRAPHIES (cont.)

STRANGERS, Stanley in A STREETCAR NAMED DESIRE, Romeo in ROMEO AND JULIET, and Mr. Darcy in PRIDE AND PREJUDICE. Nick is also a Moth Storyslam winner. Nick would like to give a special thank you to his fiancé and Parisian travel guide, Laure.



Jonathan Bangs* – SERGE

Jonathan Bangs holds a BFA degree from California Institute of the Arts. Closing in on a decade of professional practice he has been a part of numerous regional productions throughout the country (Hippodrome Theatre, Baltimore Center Stage, Kennedy Center, Philadelphia Theatre Company, Portland Center Stage, Eugene O'Neill Center, Boston Court, Boise Contemporary Theater, A.C.T) award winning short films, features films, immersive installations and a multitude of voice over projects. Jonathan starred alongside Helen Hunt and Alan Cumming in "Solar," a sci-fi podcast that was #1 in the country for a few months and voted best of the year by Samsung and Amazon. This is Jonathan's first time working at the Renaissance Theaterworks as well as in the beautiful state of Wisconsin. He couldn't be more ecstatic.



Cara Johnston – LEA

Cara Johnston is delighted to return to Renaissance Theaterworks following THE VIOLET HOUR. Born and raised in Dallas, Texas, Cara now proudly calls Milwaukee her home. In August, Cara performed her original

one-person play, THE MADWOMAN, at the Edinburgh Festival Fringe in Scotland, where she received five stars and an Offies nomination. Cara extends her heartfelt thanks to her supportive husband and their beloved pet rabbit!



Maya Danks (she/her) – U/S LEA/MEG

Maya Danks studied theatre at the University of Minnesota, Twin Cities, and now works as an actor, playwright, and director here in Milwaukee. Some recent credits include ANTIGONE (Eurydice) with Vanguard Productions, HAUNTED SOIREE - CHICAGO (Dorothy Delmont) with Meyer2Meyer Entertainment, MACBETH (Lady Macbeth/Witch) and MUCH ADO ABOUT NOTHING (Leonato/Don John) with Summit Players Theatre, and BABEL (Dani) with The Constructivists. When not on stage, Maya writes adaptations of classical plays. Maya would like to thank YOU (yes, you) for supporting local theatre. www.mayadanks.com



Jared Brandt Hoover – U/S ROOSTER

Jared is very glad to be making his debut with Renaissance Theaterworks! He has worked on projects all over Wisconsin, predominantly with Milwaukee Rep, Vanguard Productions, and Forward Theater. He would like to thank the director Mallory, the production crew and staff, this beautiful cast, and new friends. He would also like to thank Jayne Pink, Nate Burger, his family, and Mimi and Papaw for their love, knowledge, and support.

BIOGRAPHIES (cont.)



Alexia Slagle – SECOND SWING

Alexia is a Senior in the BFA Performance (Acting) program at UWM. Previous UWM credits include THE RIVALS (Lucy), THE SPARROW (Tammy Adams/Shannon Baker), THE LARAMIE PROJECT (Performer), HAMLET (Player Queen/Messenger/Ensemble), and TWELFTH NIGHT (Lighting Operator). Non-UWM credits include Milton High School's productions of LEGALLY BLONDE THE MUSICAL (Kate/DA Joyce Riley/ Ensemble), OKLAHOMA! (Ensemble), and THE DIARY OF ANNE FRANK (Margot Frank). After graduation, Alexia hopes to further her studies in classical theatre and become a professional actor.



Christopher Elst (he/they) – FIGHT & INTIMACY DIRECTOR

Christopher Elst is a prominent member of several national theater organizations (SAFD, Dueling Arts International, IDC) and an advocate for safe practices in theaters nationwide. Christopher has performed, directed, and designed violence, movement and intimacy for professional theaters across the country, including Ogunquit Playhouse, Door Shakespeare, First Stage, Finger Lakes Musical Theatre Festival (now The REV), Next Act Theatre, Milwaukee Chamber Theatre, Renaissance Theaterworks, Skylight Music Theatre, Milwaukee Opera Theatre, and the Milwaukee Rep. He is currently studying for a double MFA in Theatre Performance and Directing at Western Illinois University.

Jason Fassl~ – LIGHTING & SCENIC DESIGN

This production marks Mr. Fassl's 20th lighting design and 5th set design for RTW. Past productions include; BLACKBIRD, SKIN TIGHT, AMELIA, RUSSIAN TRANSPORT and most recently ANNIE JUMP... Over the last two decades, Jason has consumed mass quantities of electricity at Milwaukee Repertory Theater, Milwaukee Ballet, American Players Theatre, First Stage, Milwaukee Chamber Theatre, Renaissance Theaterworks, Next Act Theatre, Forward Theatre Company, Florentine Opera, Northern Sky Theatre, Peninsula Players, Milwaukee Opera Theatre, The Fireside and many others. Jason is proud member of Scenic Artists Local #829 and Milwaukee IATSE Stage Hands Local #18. Portfolio and information at www.AntiShadows.com



Bianca Gonzalez – PROPS DESIGN

Bianca is making her Renaissance debut with L'APPARTEMENT. She is a props designer and scenic painter from Kenosha, Wisconsin. She served as Props Head for SHE KILLS MONSTERS at Case High School, SCHOOLHOUSE ROCK LIVE at College of Lake County, and THE ALIENS, THE PENELOPIAD, STUPID F##KING BIRD, ROMEO AND JULIET at University of Wisconsin Parkside. Additionally, Bianca has also served as Charge Artist for SPRING AWAKENING, AS YOU LIKE IT, and SHE KILLS MONSTERS at University of Wisconsin Parkside.

BIOGRAPHIES (cont.)



Kim Instenes – COSTUME DESIGN

Kim Instenes works as a freelance costume and makeup designer in the Milwaukee/Chicago area.

Professional design credits include SHERLOCK HOLMES AND THE CASE OF THE JERSEY LILY, DOUBT and JEEVES INTERVENES at Milwaukee Chamber Theatre, THE GIVER, BIG; THE MUSICAL and THE SNOW at First Stage, ROMEO AND JULIET at Milwaukee Shakespeare as well as work at Milwaukee Repertory Theater, Renaissance Theaterworks, and the Utah Shakespeare Festival. She is currently on the theatre faculty at Carthage College where she has designed SILENT SKY, A SEAT AT THE TABLE (new play by Regina Taylor) and INTO THE WOODS, to name a few. She holds an MFA in costume design and technology from Ohio University and a BA in theatre from the University of Wisconsin-Whitewater.

Tony Lyons – TECHNICAL DIRECTOR

This season marks Anthony's eighteenth year as Technical Director for Renaissance Theaterworks. In all, he has worked in various capacities on over forty-five Renaissance productions over the last twenty-nine years. Anthony is also technical director for Wild Space Dance Company. Anthony has worked for Alverno Presents (R.I.P.), Skylight Music Theatre, Milwaukee Chamber Theatre, and Bialystock & Bloom (R.I.P.). In a parallel universe, Anthony is a partner in a small custom carpentry firm. Recent highlights: Scenery construction for Milwaukee performances of OUTPOST & OTHER STORIES FROM THE CENTRE by

William Kentridge's Centre For The Less Good Idea. Technical Director for MHK Productions BOSWELL (by playwright and Renaissance co-founder Marie Kohler) Off-Broadway at 59E59th Theater.



Raeleen McMillion – DIALECT COACH

Raeleen is happy to return to Renaissance Theaterworks where she is grateful to have been a

co-founder and one of the creators of the RED PEPPER JELLY shows! She has been working in Milwaukee's professional theatre community for more than 25 years as an actor and vocal coach. She has designed & coached several shows for RTW over the years, including SKIN TIGHT, THE ROAD TO MECCA, LETTICE & LOVAGE, BALLAD OF EMMETT TILL, and TOP GIRLS. Coaching for other Milwaukee groups includes with Next Act: MULLINGAR, BLOOD AT THE ROOT, THE REVOLUTIONISTS, LAUGHTER ON THE 23RD FLOOR, and GOD'S SPIES; for Skylight: SWEENEY TODD, LA CAGE AUX FOLLES, MY FAIR LADY, and NEWSIES! And for Milwaukee Chamber Theatre CHRISTMAS IN BABYLON, BEN BUTLER, UNNECESSARY FARCE, FIRES IN THE MIRROR, INDECENT, and MOON FOR THE MISBEGOTTEN. Raeleen is Co-Head of the BFA Acting program at UW-Milwaukee's Peck School of the Arts where she teaches Acting, Voice & Speech, and Dialects. She is a proud member of two labor unions—Actors Equity and the American Federation of Teachers and belongs to Voice & Speech Trainers Association (VASTA).

BIOGRAPHIES (cont.)



Sarah Ramos – SOUND DESIGN

Sarah is a Chicago based Sound Designer. Previous Renaissance Theaterworks credits:

BELONGING, THE ROOMMATE, TOP GIRLS, LETTICE AND LOVAGE, THE UNDERSTUDY, ENFRASCADA. Additional Milwaukee Credits: THE LIGHTNING THIEF, THE VERY HUNGRY CATERPILLAR SHOW, MOCKINGBIRD (First Stage); FIRES IN THE MIRROR, VANYA AND MASHA AND SONIA AND SPIKE (Milwaukee Chamber Theatre). Chicago credits with Goodman, Chicago Shakespeare, Steppenwolf, Writers, Lookingglass, Drury Lane, American Blues, Griffin, About Face, Gift, Congo Square, Bailiwick Chicago, Teatro Luna, Prop Thtr, and over 40 shows with Court Theatre. She is an alumnus of the North Carolina School of the Arts and a mother of two.



Mason Shefchik – DIALECT ASSISTANT

Mason is happy to be involved with his first show at Renaissance Theaterworks. He is a

senior in the BFA Musical Theatre program with minors in Music and Dance Performance at the University of Wisconsin-Milwaukee Peck School of the Arts. University Credits include ONCE UPON A MATTRESS (King Sextimus the Silent), STATE FAIR (Wayne Frake), THE RIVALS (Fig), LET ME DOWN EASY (Dialect Mentor/Coach), and THE MYSTERY OF EDWIN DROOD (The Reverend Mr. Crisparkle/Ensemble) at UWM. Other credits include NEWSIES (Elmer/Race u/s) at Sunset Playhouse and FIDDLER ON THE ROOF (Dialect Coach) at Denmark High School.



Beck Trumbull (they/ them) – ASST. STAGE MANAGER

Beck Trumbull is thrilled to be returning to RTW! Originally from Northeast

Ohio, they are now proud to call Milwaukee home. Select credits include WITCH (ASM) at RTW, A MOON FOR THE MISBEGOTTEN (ASM) at Milwaukee Chamber Theatre, LLAMA LLAMA RED PAJAMA LIVE! (National Tour; SM/Tour Manager) and ELEPHANT AND PIGGIE'S "WE ARE IN A PLAY!" (ASM) at Bay Area Children's Theatre; and THE PLAY THAT GOES WRONG (ASM) at Florida Studio Theatre. They have never stayed in a fancy apartment in Paris, but they have drunk wine in their living room while listening to French music, which is basically the same thing.



Bailey Wegner (she/her) – PRODUCTION & STAGE MANAGER

Since 2017 Bailey has filled many off-stage roles at RTW including PM, SM,

ASM, CCO, (accidental) IT, and some with acronyms that are TBD. Of more than a dozen productions at RTW, highlights include WITCH, COST OF LIVING, THE ROOMMATE, PHOTOGRAPH 51, TOP GIRLS, and the Samuel French Off-Off Broadway Festival. A favorite part of the season is the Br!NK New Play Festival, which she has been stage managing for 6 years. Credits for Milwaukee Chamber Theater; INDECENT (SM) and THE FEW (ASM). She holds a BFA in Theater from UW Milwaukee. Outside of the theater, she can be found kayaking and watching films at the Oriental theater.

JOIN US FOR OUR 2024-2025 SEASON!

Escape the Ordinary.

the Moors

by Jen Silverman

Directed by Suzan Fete

October 20 – November 10, 2024

Previews October 18 & 19

the NETHER

by Jennifer Haley

Directed by Elyse Edelman

January 12 – February 2, 2025

Previews January 10 & 11

by Jonathan Tolins *Buyer & Cellar*

Directed by Ray Jivoff

March 23 – April 13, 2025

Previews March 21 & 22

Talk to an RTW Staff member
in the lobby to get the
best deal on tickets with
a season subscription!

STAFF BIOGRAPHIES



Suzan Fete (she/her) – ARTISTIC DIRECTOR

Suzan is a graduate of University of Illinois. Suzan co-founded RTW in 1993. Favorite RTW

projects include: directing WITCH, TOPDOG/UNDERDOG, THE SHAPE OF THINGS, BLACKBIRD, TOP GIRLS, and THE ROAD TO MECCA, touring NEAT to Port Elizabeth, South Africa in 2013 and finishing as finalists with ALL OF THE EVERYTHING and LUCKY NUMBERS in the Samuel French Off Broadway Short Play Festival, in 2015 and 2019 respectively. Suzan is especially proud that RTW won the prestigious 50/50 in 2020 International Applause Award for the 2015-16 season in recognition of RTW's commitment to women playwrights. Suzan lives happily in Wauwatosa with her husband, Jeff, and emotional support peacock Leon.



Lisa Rasmussen (she/her) – MANAGING DIRECTOR

This season is Lisa's sixteenth at RTW which means she has been

serving the unique mission of "theater by women, for everyone" for more than half of its life! Lisa started as RTW's Development Director in 2008. In December 2017, Lisa was promoted to Managing Director. Since then, she has overseen 15 full productions, five Br!NK New Play Festivals and the move to this beautiful performance space (the most accessible theatre in town). Lisa received her BA in Theater and Psychology from Cardinal Stritch University in 2003. Lisa loves living in Bay View with her husband Jake, daughter Anna and puppy Bjorn.

RENAISSANCE THEATERWORKS STAFF

Artistic Director Suzan Fete
Managing Director Lisa Rasmussen
Marketing Director Sarah Kriger Hwang
Development Director Dana Dossett
Artistic Associate Jayne Regan Pink
Marketing Manager Maria Pretzl
Production Manager Bailey Wegner
Assistant to the Regional Branch Manager Dog the Bunny

RENAISSANCE THEATERWORKS BOARD OF DIRECTORS 2023-2024

EXECUTIVE COMMITTEE

President: Ginny Finn | *Treasurer:* Laura Arnow | *Secretary:* Sofia N. Ascorbe

DIRECTORS

Mary Beth Alvarez	Patti Keating Kahn	Vivian Moller
George Dionisopoulos	Joanne Lipo Zovic	Jodi Ristau
Susan Frautschi	Michele Matthai	Beth Weirick
	N. Lynnette McNeely	

ABOUT RENAISSANCE THEATERWORKS

Renaissance Theaterworks, "Theater by Women for Everyone", is Milwaukee's first, women-founded, women-run professional theater company. Dedicated to promoting the work of women onstage and off, Renaissance Theaterworks creates theater that connects with all people – and what it means to be human – through vibrant, visceral storytelling.

Founded in 1993 by Suzan Fete, Marie Kohler, Raeleen McMillion, Jennifer Rupp and Michele Traband, Renaissance Theaterworks is the nation's second oldest theater company with a mission to promote gender parity in theater. Renaissance Theaterworks produces outstanding, artistically unsurpassed theater that makes audiences feel more, think harder, laugh louder.

Renaissance Theaterworks is now a resident theater company at 255 S. Water Street. This bold move will allow us to continue on a positive trajectory for many years to come. Administrative offices remain on the 5th floor of the Broadway Theatre Center.

Renaissance Theaterworks is a member of the National New Play Network, Playwrights Welcome, Theatre Communications Group Hispanic Professionals of Greater Milwaukee, Visit Milwaukee, World Premiere Wisconsin and the Historic Third Ward Association. In 2018, Renaissance Theaterworks hosted Statera Con III and supports Statera Arts.

Office: 158 N. Broadway 414-273-0800 | **Performances:** 255 South Water St.

Tickets: R-T-W.com or **Box Office:** 414-278-0765

Mon.-Fri. 12-5pm and 2 hours before every performance.

Join our email list at **R-T-W.com** and follow us on social media!

GREEN ROOM GROUP

Our Green Room Group is an exclusive circle of our major individual donors. They receive special benefits and behind-the-scenes access to the fun and excitement of Renaissance Theaterworks.

As a Green Room Group member you play a huge role in our mission. Your gift supports gender balance. You enable us to hire the finest actors and directors who bring us extraordinary, sold-out performances. We'll see you in the Green Room!

- | | | |
|-------------------------------|------------------------------------|----------------------------------|
| Anonymous (3) | Kathleen & John Hickey | Vivian Moller |
| George Affeldt | Susan Holmes | Lori Morse & Robert Gardenier |
| Dr. Mary Beth Alvarez | Sarah & Milt Hwang | Chris Mortensen |
| Catherine Anderson | Sarah & Vlad Jelencic | Frank Mozer |
| Patricia & David Anderson | Patricia Keating Kahn & Chuck Kahn | Kate & Ken Muth |
| Laura & Mike Arnow | Tanya Atkinson | Joyce and H. Pabst |
| Donna & Donald Baumgartner | Brandy Kline & Michael Anderson | Dr. David Paris & Derin Bjugstad |
| Sarah Beckett | Marie Kohler & Brian Mani | Lois & Richard Pauls |
| Liz & Scott Bickley | Leslie Kohler | Mary & Ross Read |
| Amy & Dylan Bolin | Mary Korkor | J. Michael Reavis |
| Amy & Nate Cade | Pam Kriger | Susan Riedel |
| Miriam Colton & Holly Rehberg | Diane & James Kuntzelman | Jodi Ristau |
| Margaret Dethloff & Terri Zeh | Sandra Laedtke | Jennifer Rupp & Richard Chudnow |
| Judges Jean & John DiMotto | Laura Lindner | Molly & Jeff Schissler |
| George & Sandy Dionisopoulos | Joanne Lipo Zovic & Paul Zovic | Jan Serr & John Shannon |
| Mike Drescher | Marianne & Sheldon Lubar | Lois Smith |
| Donna Drosner | Sherry & Rick Lundell | Patricia & Jerry Styberg |
| Suzan & Jeff Fete | Jane Barclay Mandel & Paul Mandel | Julie & David Uihlein |
| Virginia Finn & Evan Lenhardt | Barbara Manger & Bill Lynch | Elizabeth Weirick |
| Susan & Timothy Frautschi | Mary Jo & Guy McDonald | Kim Wynn |
| Pamela Frautschi | N. Lynnette McNeely | Sandra Zingler |
| Kathy & Stewart Friend | | Judith Marie Zwirlein |
| Katie Heil | | |

DONORS

Renaissance Theaterworks gratefully acknowledges the following individuals and organizations for their generous support. Donations listed were received between July 1, 2022 and March 1, 2024. Make a gift today by visiting r-t-w.com.

- \$100,000+**
 United Performing Arts Fund
- \$10,000+**
 Laura & Mike Arnow
 Bader Philanthropies Inc.
 Donna & Donald Baumgartner
 Brico Fund
 George & Sandy Dionisopoulos
 Suzan & Jeff Fete
 Susan & Timothy Frautschi
 Greater Milwaukee Foundation
 Herzfeld Foundation
 Greater Milwaukee Foundation's Judith A. Keyes Family Fund
 National Endowment for the Arts
 J. Michael Reavis
 Ruth Arts
 Shubert Foundation
 Stafford Rosenbaum, LLP
 Bert L. & Patricia S. Steigleder Charitable Trust
 Julie & David Uihlein
 Sandra Zingler
- Catherine Anderson
 Patricia & David Anderson
 Sarah Beckett
 Liz & Scott Bickley
 Amy & Dylan Bolin
 Amy & Nate Cade
 Miriam Colton & Holly Rehberg
 Margaret Dethloff & Terri Zeh
 Mike Drescher
 Donna Drosner
 Drosner Phillips Ristau Group at Baird
 Fiduciary Management, Inc.
 Virginia Finn & Evan Lenhardt
 Pamela Frautschi
 Kathy & Stewart Friend
 Gardner Foundation
 Greater Milwaukee Foundation
 Briggs & Stratton Fund
 Colton Charitable Fund
 Greater Milwaukee Assn. of Realtors Youth Fnd. Inc
 Heil Family Foundation
 Kathleen & John Hickey
 Susan Holmes
 Sarah & Milt Hwang
 Sarah & Vlad Jelencic
 Patricia Keating Kahn & Chuck Kahn
 Kirsten & Andy Kerr
 Brandy Kline & Michael Anderson
 Leslie Kohler
 Mary Korkor
 Pam Kriger
 Diane & James Kuntzelman
 Sandra Laedtke
 Laura Lindner
 Joanne Lipo Zovic & Paul Zovic
 Jane Barclay Mandel & Paul Mandel
 Barbara Manger & Bill Lynch
 Mary Jo & Guy McDonald
 N. Lynnette McNeely
 Vivian Moller
 Lori Morse & Robert Gardenier
 Chris Mortensen
- Kate & Ken Muth
 Charles D. Ortgiesen Foundation
 Joyce and H. Pabst
 Dr. David Paris & Derin Bjugstad
 Lois & Richard Pauls
 Peck Foundation, Milwaukee
 Clare M. Peters Charitable Trust
 Mary & Ross Read
 Susan Riedel
 Jennifer Rupp & Richard Chudnow
 Molly & Jeff Schissler
 Lois Smith
 Patricia & Jerry Styberg
 Elizabeth Weirick
 Windhover Foundation
 David Winograd
 Wisconsin Humanities Council
 Woman's Club of Wisconsin Foundation
 Kim Wynn
 Judith Marie Zwirlein
- \$500+**
 Erin Anderson
 Janine Arseneau
 Daniel D. Blinka
 Jill Broekhuizen
 Diane & David Buck
 Brenda Andrews & James Cauley
 Ellen & Joe Checota
 Catherine & Mario Costantini
 Patricia D'Angelo
 Sandy Duffy
 Sally & Al Ferguson
 Kirsten & Bill Finn
 Sarah Ford & Randall Klumb
 Danni and Shel Gendelman Memorial Endowment
 Laura Gordon
 Barbara Haig & Daniel Schley
 Anne Hamilton Geilfuss & Frederick Geilfuss
 Margarete & David Harvey

WHAT IS THE Green Room Group?

In theater, the green room is a special space for an actor to focus, connect with fellow artists, prepare for the next scene, and even celebrate after a show.

At Renaissance Theaterworks, the "Green Room Group" is composed of Milwaukee's most vibrant cultural supporters, and our largest, most steadfast donors. They set the scene

for us to connect directly with the community, produce high quality, diverse stories, and celebrate as we go!

Green Room Group members gain *behind-the-scenes* insights on how we harness our **artistic** and **financial resources** to create moving theater.

Members are also invited to special events like the **First Rehearsal** of each production to hear the cast read the script aloud for the first time and the **Opening Night reception** to raise a glass with us and mingle with the creative team.

MEET US IN THE
Green Room!

CONTACT
DANA DOSSETT
 Development Manager
 DDossett@r-t-w.com

DONORS (cont.)

Zoe Higgins
 Mary & Mark Hollister
 Angela Jacobi
 Bruce Johnson
 Annie Jurczyk
 Donna Kleczka
 Barbara & Dennis Klein
 Lola & Bob Loepfe
 Joan Lubar & John Crouch
 Lee Marquardt
 Sarah McEneaney & Robert Smith
 Jane O'Connell
 Kari Pietsch-Wangard
 Candy & Bruce Pindyck
 Jayne Regan Pink & Michael Pink
 Nancy Pinter
 Devon & John Pittman
 Carol & Kevin Schuele
 Rebecca Schultz
 Pamela Seccombe
 Janine & Bruce Smith
 Linda & Thomas Streifender
 Anne & Gary Summers
 Carolyn Sweers
 Joy Towell
 Terry Tuttle & Michael Murphy
 Patricia Van Alyea
 Linda Benfield & Steve Wallace
 Mary Wegener
 Gwendolyn & William Werner
 Marilyn White
 Joan Wiegand
 Patricia Williams

\$250+

Actors' Equity Foundation
 Elizabeth A. Amato
 Anonymous
 Sofia Ascorbe
 David Berg
 Marcia Brooks & Edward Hammond
 Mary Jo Burgoyne
 Linda & Thomas Burke
 Laurie & Peter Byrne
 Chris Calvelli
 Sharon & Mark Cameli
 Deborah & David Cecsarini

Jane & Stephen Chernof
 Mary & James Connelly
 Christy D'Angelo
 Gabrielle Davidson & Rob Lyon
 Mary Jo & Tom Dempsey
 Anne DiMotto
 Carol Z. Dolphin
 Kathleen Donius & Paul Kosidowski
 Diane & Robert Donohoo
 Dana & Corey Dossett
 Chip Duncan
 Linda Edelstein
 Tina Eickermann
 Judy & James Findling
 Bette & Richard Frangescs
 Amy & Andrew Funk
 Idy Goodman
 Sheila & Harry Gustafson
 Katie Heil
 Margaret Henningsen
 Bett Jacquart
 Jacob Janssen
 Alyce & Paul Katayama
 Katherine & Vincent Katter
 Michele Kenner
 Elizabeth Levins
 Sue & Greg Lochen
 Mary McCormick & Timothy Hawks
 Lois Malawsky
 Sara & Howard Miller
 Wendy Moeller
 Theresa & Bob Muselman
 Holly & Gregory Orlowski
 Jill Anna Ponasik & William H. Bradley

Mary Pretat
 Amy Rabideau Silvers & Joe Silvers
 Christine Radiske & Herbert Quigley
 Lynn Rix
 Emily Robertson
 LindaGale Sampson
 Susan & Michael Schall
 Judith & Bob Scott
 Eileen & George Stone
 Kimberly Stoner & Cory Krivitz
 Michael Sullivan
 Nici Teweles

Sheryl Van Haren
 Susan Vetrovsky & Michael Goldstone
 Donna & Jerry Walsh
 Jenny Wanasek & Mark Weinberg
 Adrienne & Larry Waters
 Phyllis Wax
 Lani Williams & Earl Potter

\$100+

Libby Amato
 Christine Anderson
 Joy & Steve Appel
 Tanya Atkinson
 Erica Arrington
 Philip Backe
 Mary & Larry Bandor
 Aliza Baran
 Brian Bauman
 Cindy Benning
 Marta & Marc Bianchini
 Kathie Eilers & Barry Blackwell
 Holly Blomquist
 Julie & William Bonnell
 Anne Brower & Jane Earle
 June & Jim Buskel
 Jason Buskel
 Timothy Butts
 Doris Carroll
 Mary Belle & Thomas Chatton
 Cecile Cheng
 Mary Jo & John Coffee
 Eleanor & Michael Cotey
 Kathleen Allen Crocker
 Barbara Dittl
 Jennifer Dobby
 Sharon Dossett
 Deborah & Michael Duncan
 Barbara Duffy & Donn Preston
 Dr. Eric Durant
 Sigrid Dynek
 John Emanuel
 Cecile & Dennis Engel
 Cody Estle
 Michael Evans
 Kevin Flaherty
 David Flores
 Brooke & Craig Frizzell
 Amy Funk
 Patricia Gahl & Gregory Polak

DONORS (cont.)

Paula & Ralph Garcia
 Amy L Giampetroni
 Peter Goldberg
 Karen Gotwalt & Ronald Reitz
 Stephanie Govin-Matzat
 Alison Graf
 Sandy & Mark Grady
 Nancy & Reed Groethe
 Katherine Grogan
 Charles Grosz
 Matthew Groth
 Lyn & Michael Hamilton
 Diana & Ronald Hanks
 Amelia Hanks
 Lisa & Michael Hatch
 Alice Hatzenbeller
 Louise Hermsen
 Michelle Herro
 Mary Hessel
 Cecilia Hillard
 Robert Hirschi
 Deborah & David Hoffman
 Victoria Hudziak
 Darryl Huennekens
 Danielle Ippolito
 Cathy Jakicic
 Kristine Jensen
 Paula John
 Carol Justin & Ed Szopinski
 Diane & Richard Kane
 Marcella Kearns
 Edward Kelly
 Demaris Kenwood
 Kirsten & Andrew Kerr
 Elizabeth Kocol
 Kathi Koenig
 Maureen and Daniel Konkol
 Konrad Kuchenbach
 Frances Kulutbanis
 Harvey Kurtz & Yvonne Larme
 Linda Laarman
 James & Charmaine LaBelle
 Dannelle & Avrum Lank
 Judy & Norm Lasca
 Emily Leick
 Sally Lemke
 Justine Leonard
 Sheri & Lloyd Levin
 Paula Lewein
 Natalie & Gary Longworth
 Lynn Lucius & Richard Taylor

A.J. Magoon
 Sherry & Norman Malmon
 Judy Martel
 Dr. Lisa Wehr-Maves & Dr. Matthew Maves
 Maureen McAvooy
 LaVerne McCoy
 Elaine McDermott
 Barbara McMath & Robert Ferriday, III
 Raeleen McMillion
 Cara McMullin
 N. Lynnette McNeely
 Debra Melvin
 Pat & Gary Moldenhauer
 Patricia & Mark Monroe
 Cindy Moran & Todd Broadie
 Andrew Muriuki
 John Murtaugh
 Ann Navin
 Donna Neal
 Jane Nicholson
 Marjorie Nixon
 Christine & James O'Brien
 Kathy & Alan Olsen
 Joseph Pabst
 Gerry Pas
 Paula Penebaker
 Pam Percy
 John Peters
 Janet & Randy Peterson
 Kathryn Podmokly
 Teresa & Michael Prattke
 Patrick Rath
 Anna & Dan Robbins
 Karyn & David Roelke
 Jinnene Ross
 Annemarie Sawkins
 Lynne Schade
 Robert Schellhammer & Maureen Holt
 Carole & Joe Schlangen
 Laura Schnicke & Robert Mohr
 Ruth Schudson
 Brooke Schultz
 Micki Seinfeld
 Carney Silberg
 Patrick Small
 Minna & Mark Smith
 Judith & Jerrel Stanley
 Nancy Dahms Steller & Lyle

Steller
 Lena Stephenson
 Richard Stone
 Sandra Strawn
 Karen & Sandy Swartzberg
 Virginia & John Taucher
 Tawnie Thompson
 Sara Toenes
 Sophia Angela Topetzes-Strelka
 Josie Trettin
 Julia Vosper
 Yvonne Wagner
 Margaret & John Ward
 Catherine Washabaugh
 Carole & Bill Wenerowicz
 Sandra Wiegand
 Margaret Wilber
 Maxine Wishner
 Mary & Roger Wolverton
 Carolyn Wood
 Michael Wright & Ray Jivoff
 David Zalewski
 Katrene Zelenovskiy
 Herbert Zien

\$50+

June & Paul Ambro
 Rebecca Bardwell
 Diane Barton
 Thomas J. Basting Sr.
 Amy Biersteker
 Ann Bowe
 Jeanette Braun
 Debra Brehmer
 Rick Burbey
 Robin Burns
 Gladys Chmiel
 Elizabeth Cichowski
 Flora Coker
 Lori Craig
 Patricia & Phillip Crump
 Mary & Richard Cywinski
 Cynthia Dicamelli
 Linda & Pat Devitt
 Elizabeth & Peter Dietz
 Miriam & Rick Falk
 Mary Alice Fifer
 Patty Francis
 Will Graft
 David Hertel

DONORS (cont.)

Karen Johnson & James Toth
Maureen Kania
Judith & William Kay
Sarajane & Robert Kennedy
Donald Kielich
Richard Knoedler
Linda J Nielsen Korducki
Karen & Dennis Leyer
James Lyon
Nicole Magnusson
Tara Mallen
Patricia Martin
Melissa McCord
Mallory McGinty
Marc Mitchell
Frank Mozer
Bruce Murphy
Pat O'Connell
Francisca A. Olmedo-Estrada

Marianne Plaisier & Gordan
Mortensen
Lynn Preston
Ellen Purtell
Darlene Roberts
Carla Roden
Linda Roethlisberger & Dennis
Hennessey
Brigitte Salver & Fay Sanders
Alex Scheurell
Ellen Friebert Schupper
Patrick Schley
Pam Shy
Shayne Steliga
Linda Stephens
Susan Stewart
Christine Straw
Judge Jeff & Dyan Wagner

Josef Wantschik
Dean Wegner
Alyce & Russell Weiss
Marie Weiss
Dawn Wenzell
Nick Werner
Christine Yundem

IN KIND

Cooper's Hawk
Florentine Opera Company
Sarah & Milt Hwang
Milwaukee Ballet
Next Act Theatre
Outskirts Theatre Company
Jayne & Michael Pink
Traveling Lemur Productions,
LLC
Skylight Music Theatre
Julie & David Uihlein

ABOUT UPAF

Each year, more than 30,000 individuals, corporations and foundations in greater Milwaukee annually support the UPAF annual campaign, making it one of the nation's largest united arts funds. In addition to raising and allocating operating funds, UPAF is enhancing its value to the community, donors and performing arts by serving as a community wide resource for developing the excellence, reputation and impact of our performing arts.

The Renaissance Society

Established to recognize those who have made an estate or planned gift to Renaissance Theaterworks, Inc.

Your forethought will ensure long-term viability for RTW's unique mission, as well as the continuation of our uninterrupted debt-free history.

Legacy gifts can be made through bequests, life insurance, IRAs or other planned giving arrangements.

Have you already included Renaissance Theaterworks in your planning?

Please let us know!

Join Now!

Interested in learning more?
Contact Dana Dossett, Development Manager at DDossett@r-t-w.com



**THE
TREASURER**
BY
MAX POSNER

APR 24 - MAY 19, 2024

Directed by Cody Estle
Featuring Annabel Armour, David Flores, Alexis Green
and Reese Madigan

Ida Armstrong is broke, lonely and fading fast. And she's spending all of her children's money, forcing her son to assume the unwanted role of The Treasurer: an arrangement that becomes untenable the more he questions his devotion to her. In this darkly funny, sharply intimate portrait, Max Posner chronicles the strained ties between a son and his aging mother, and the hell of a guilty conscience.

Tickets: [414] 278-0765 | nextact.org | 255 S Water St, Milwaukee



RtW Br!NK

New Play Festival

May 18th & 19th

at Milwaukee Ballet's
Baumgartner Center for Dance
128 N Jackson St.

Featuring

Full length readings of

Black Bear Island

by Karissa Murell Myers
May 18 at 7pm

Tragedy Sound

by Karen Saari
May 19 at 7pm

And the return of

Br!NK Br!EFS

A collection of short plays
May 18 & 19 at 2pm

www.r-t-w.com/brink

